

Technical Data Plan View

Dimensions

Exterior Dimensions (Inches)	72.75" x 30" x 37.25"
Interior Dimensions (Inches)	69" x 24" x 24"
Packaging Dimensions (Inches)	75.4" x 33.5" x 37.7"
Capacity (cu. ft.)	23 cu. ft.
Gross Weight (lbs)	353 lbs

Construction

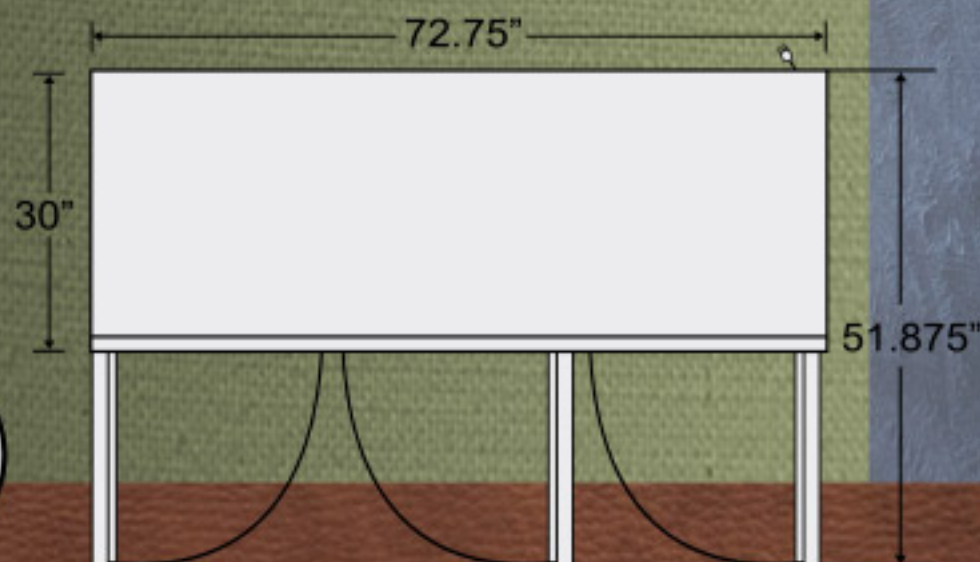
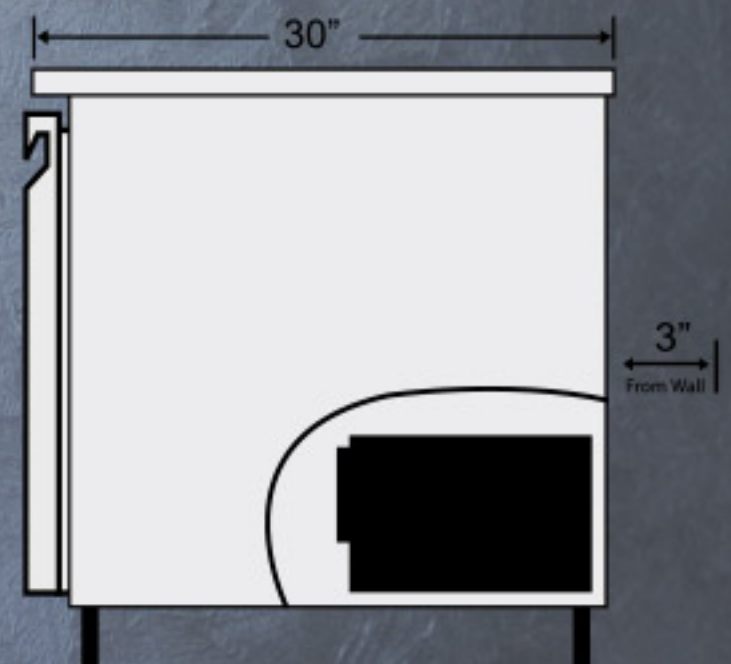
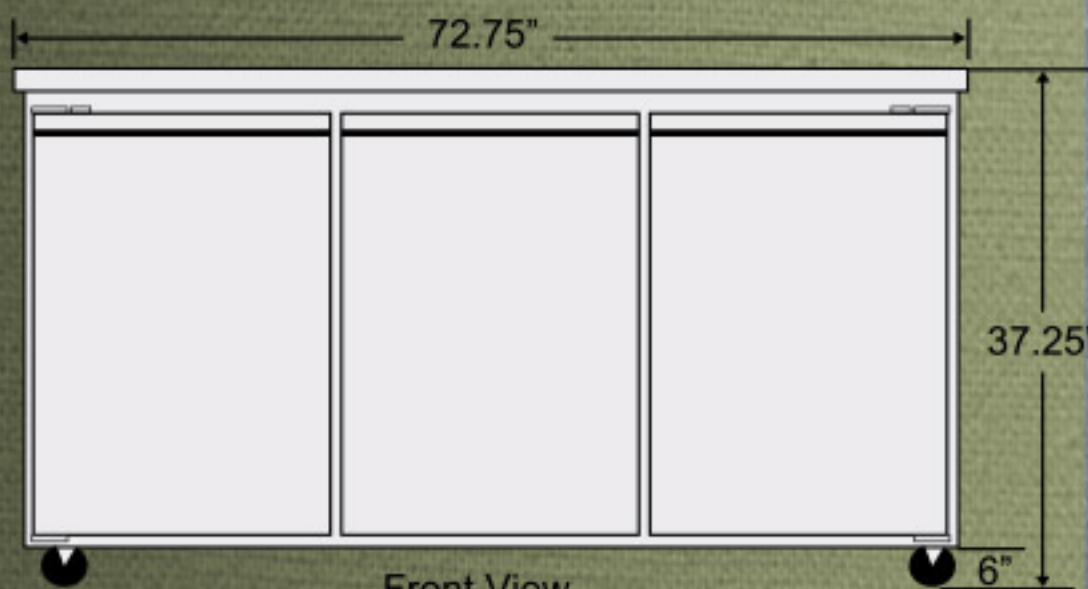
Exterior Material	430 series stainless steel
Interior Material	430 series stainless steel
Insulation Material	Polyurethane
Insulation Thickness (mm)	45
# of Doors	3
# of Shelves	3
Shelf Material	Plastic coated steel
Shelf Load Capacity (lbs/pc)	155 lbs

Cooling

Temperature Range	33° ~ 40° F
Refrigerant	R290
Refrigerant Amount (oz)	11.6
Maximum Ambient Temperature Rating	90° F
Defrost Method	Air Defrost
Defrost Power (W)	500
Cooling Method	Ventilated
Temperature Controller	Thermostat
Compressor H/P	1/3

Electrical

Voltage (v/Hz)	115/60
Power (W)	390
Power Consumption (kw/24hr)	1.7
Phase	1

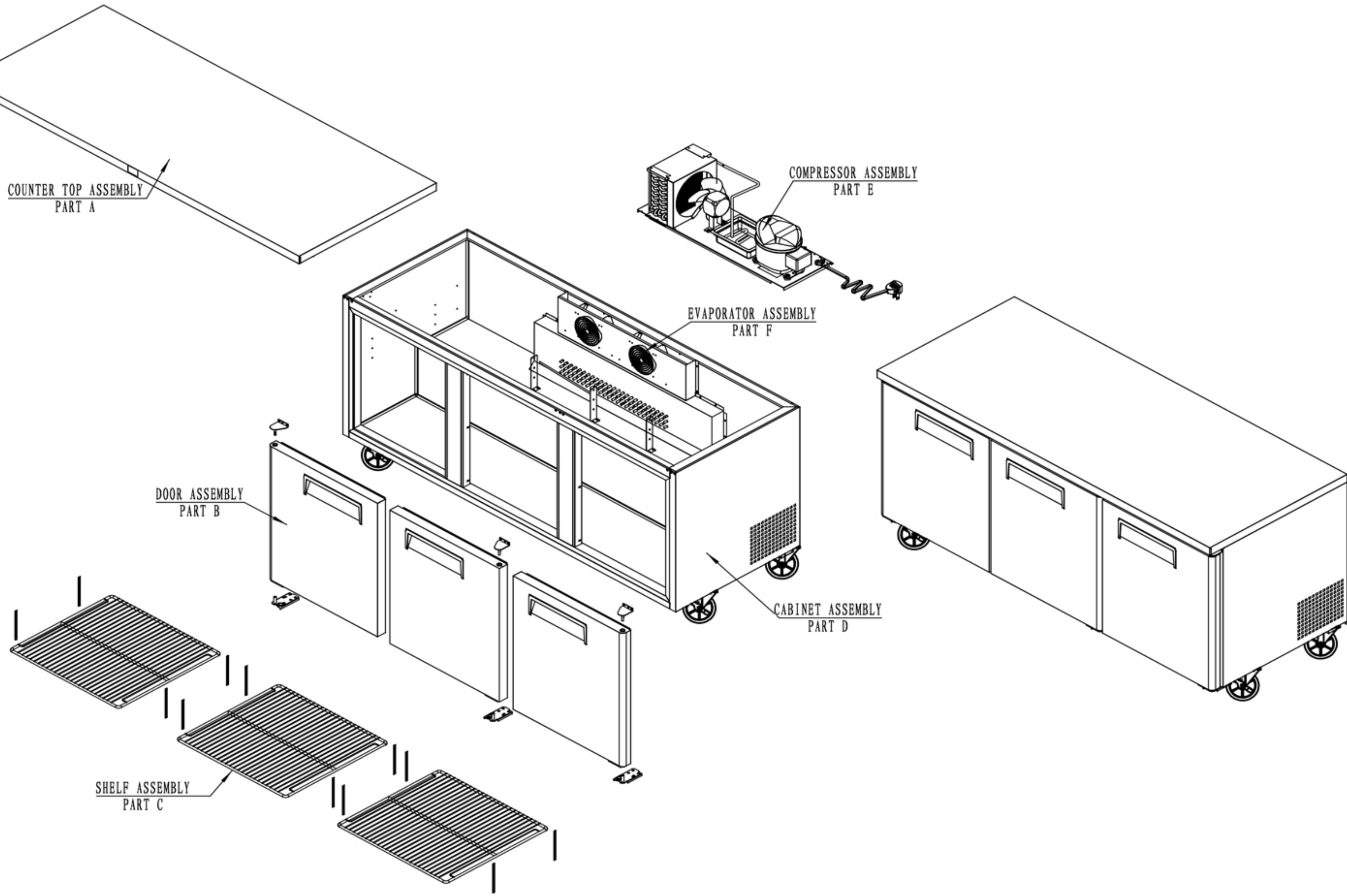


NEMA 5-15P

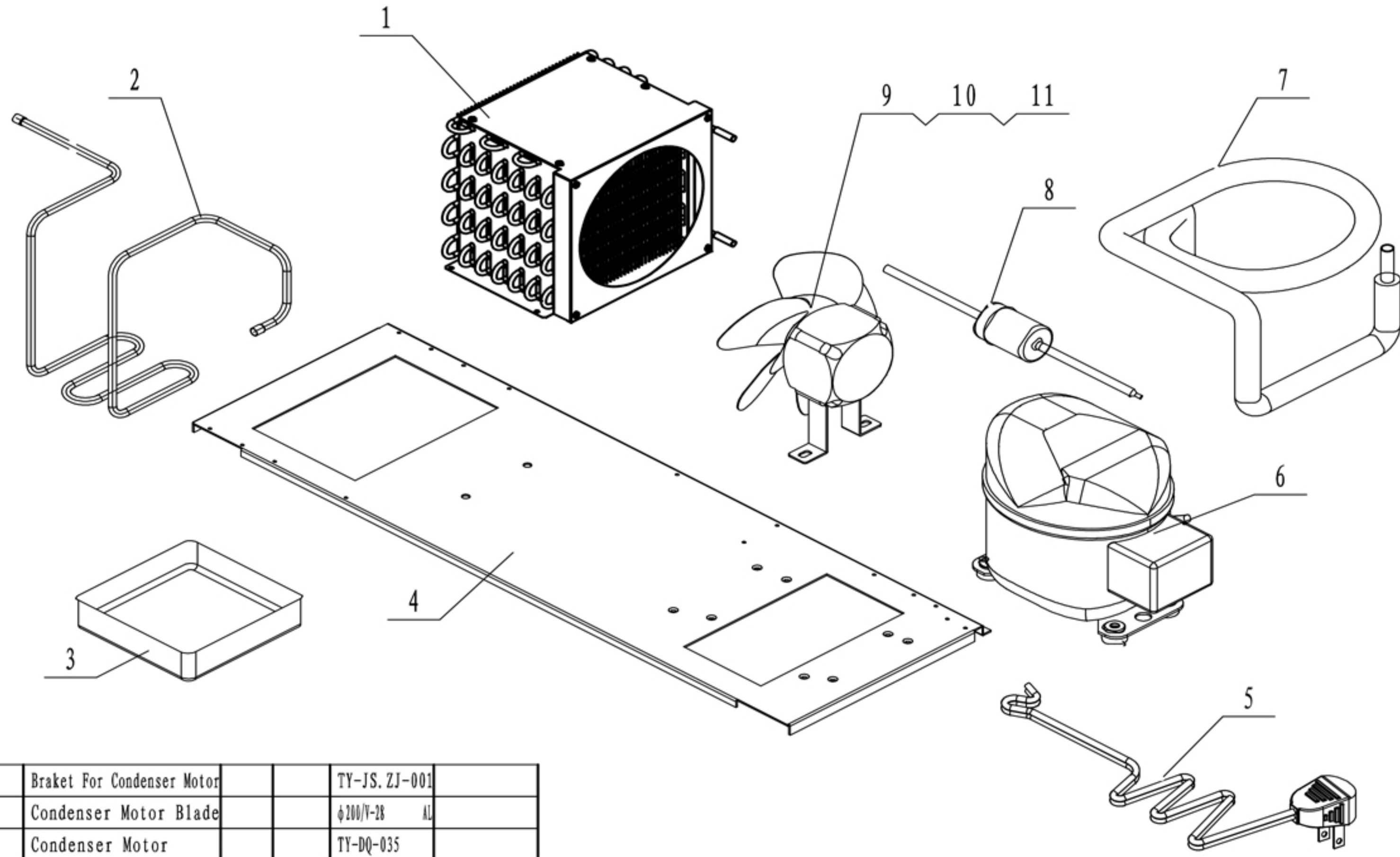


COMPLIES WITH ANSI/NSF 7
FOR FOOD SERVICE

BUR-72



BUR-72 Compressor Assembly



11	W0604079		1	Braket For Condenser Motor		TY-JS. ZJ-001
10	W0301060		1	Condenser Motor Blade		φ200/Y-28 AL
9	W0301905		1	Condenser Motor		TY-DQ-035
8	W0204003		1	Dryer Filter		XFL-032S
7	W0210582	(B)	1	Suction Tube B with Capillary		CU
6	W0201164		1	Compressor		R290
5	W0305134		1	Power Cord		NEMAL5-15P
4	83022105		1	Board For Comp Assembly		
3	W0411206		1	Bottom Evap-Water Pan		ABS
2	W0210351		1	Coil-Pipe Radiator		CU
1	W0203048		1	Condenser		CU