



Your Solutions Partner

LIMITED TIME ONLY

SALE

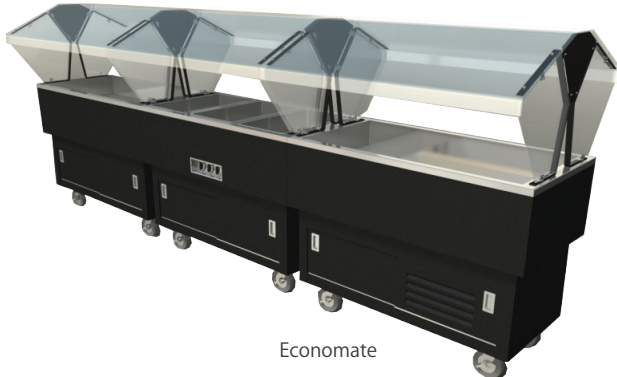
JULY 17<sup>TH</sup> THRU SEP 29<sup>TH</sup>

USE CODE : BUF2017

PRODUCT SPOTLIGHT

# DUKE BUFFET UNITS

## ECONOMATE & HERITAGE



Economate



Heritage

See Which Duke Buffet Unit Works Best For Your Needs

TO PLACE AN ORDER: [OrderEntry@dukemfg.com](mailto:OrderEntry@dukemfg.com)  
USE CODE:BUF2017

VISIT US ONLINE: [dukemfg.com](http://dukemfg.com) to learn more.

DUKE CORPORATE: 2305 N. Broadway, St. Louis, MO 63102



DEALER PROMOTION  
**SUMMER 2017**

**SALE** LIMITED TIME OFFER!  
JULY 17<sup>TH</sup> - SEP 29<sup>TH</sup>

TO PLACE AN ORDER:  
[ORDERENTRY@DUKEMFG.COM](mailto:ORDERENTRY@DUKEMFG.COM)  
USE CODE:BUF2017

## WHY ECONOMATE™?

Our most economical line of buffet units, Economate, features durable, attractive and budget friendly options. Economate buffet units are portable and contain both open and closed storage base options. Economate is also available in a table top model. Match your décor with a choice of 12 standard powder coat finishes for the heavy gauge steel bodies.

## WHY HERITAGE®?

A step up from our Economate option, Heritage offers complete versatile buffet and salad bar stations with upscale veneer finishes. Transform any space instantly into a beautiful dining and serving area using one unit, a combination of units or a full line up depending on your menu or occasion. Once the meal is finished, these units can be easily wheeled away and stored. For added warmth or elegance, pair your Heritage units with designer food shields.



DPAH-4-HF

-  Mobile
-  Line Up
-  Space
-  Cost
-  Single
-  Modular

### Cost effective, modular and portable space saver

- Economical dual-body construction
- Open based, closed base and table top models
- (12) standard powder coat paint finishes for the heavy gauge steel bodies



HB3HF  
shown with optional foodshield and tray slide

-  Mobile
-  Line Up
-  Space
-  Cost

### Versatile, complete buffet and salad bar station with upscale veneer finishes

- 300 Series stainless steel tops and trim
- All sides veneered with plastic laminate
- Hot wells are sealed and feature manifolded drains
- Units include hot, cold, carving stations, frost tops and

- Applicable Market Segments: K-12, Dorm Facilities, Senior Living, Mom and Pop Restaurants

### HOT FOOD UNITS

Model	# of wells	List Price	SALE
DPAH-2-HF	2		
DPAH-3-HF	3		
DPAH-4-HF	4		
OPAH-2-HF	2		
OPAH-3-HF	3		
OPAH-4-HF	4		
TAH-2-HF	2		
TAH-3-HF	3		
TAH-4-HF	4		

**OPAH** Open Base  
**DPAH** Closed Base  
**TAH** Table Top

### ICE COOLED COLD PANS

Model	# of wells	List Price	SALE
DPAH-2-CP	2		
DPAH-3-CP	3		
DPAH-4-CP	4		
OPAH-2-CP	2		
OPAH-3-CP	3		
OPAH-4-CP	4		
TAH-2-CP	2		
TAH-3-CP	3		
TAH-4-CP	4		

**12 Powder Coat  
Paint Colors**

### COMBO UNITS

Model	# of wells	List Price	SALE
DPAH-1H2C	2		
DPAH-1H3C	3		
DPAH-2H2C	4		
OPAH-1H2C	2		
OPAH-1H3C	3		
OPAH-2H2C	4		
TAH-1H2C	3		
TAH-1H3C	4		
TAH-2H2C	4		

- cashier stands
- (8) laminate finishes for the Heritage line to enhance the warmth and elegance of both contemporary and traditional decor
- (3) powder coat paint colors for the optional Heritage Style foodshields to choose from
- Applicable Market Segments: K-12, College and University, B&I and Upscale Restaurants

### HOT FOOD UNITS

Model	# of wells	List Price	SALE
HB2HF	2		
HB3HF	3		
HB4HF	4		
HB5HF	5		

### CARVING STATION

Model	List Price	SALE
HB2BC		

### ICE COOLED COLD PANS

Model	# of wells	List Price	SALE
HB3CI	3		
HB4CI	4		
HB5CI	5		

### CASH REGISTER

Model	List Price	SALE
HB2CS		

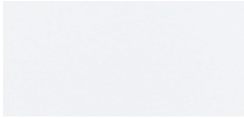
### NSF-7 COLD PANS

Model	# of wells	List Price	SALE
HB3CM-N7	3		
HB4CM-N7	4		
HB5CM-N7	5		

### COMBO UNITS

Model	# of wells	List Price	SALE
HB3-1H2C	3		
HB3-2H1C	3		
HB4-1H3C	4		
HB4-2H2C	4		
HB4-3H1C	4		
HB5-1H4C	5		
HB5-2H3C	5		
HB5-3H2C	5		

## Economate Powder Coat Paint Colors (You must specify your choice of available colors when ordering)



#217105 - Bright White



#217103 - Natural Almond



#217150 - Orange



#217154 - Racing Red



#217107 - Hollyberry Red



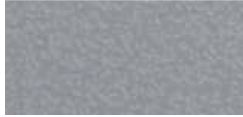
#217120 - Sky Blue



#217127 - Fence Green



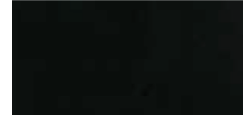
#217152 - Stone Gray



#217102 - Silver Hammer



#217113 - Brown Kickplate



#217101 - Semi-Gloss Black

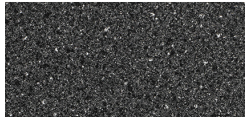


#217125 - Textured Black

## Heritage Buffet Unit Color and Finish Selections (You must specify your choice of available finishes for Heritage Buffet Unit and optional Food Shields and Trayslides when ordering by adding the appropriate finish/color suffix number to the product model number)



HB-06 Northern Oak



HB-03 - Ebony Star



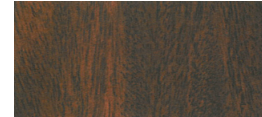
HB-04 - Oxide



HB- 01 - Sand Flow



HB-07 Wheat Strand



HB-11 Acajou Mahogany



HB-12 Amber Maple

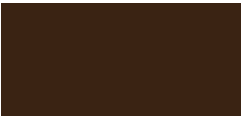


HB- 13- Denim Twill

## Food Shield Colors



HB-10 Black Matte



HB-20 Copper



HB-30 Brown

The colors above were matched to the actual products in broad daylight. Discrepancies between paper and metal may cause slight variances. Duke will do everything in our power to assure consistency and accuracy.

For actual finish samples please contact Duke's St. Louis office by calling 1-800-735-3853