

Project \_\_\_\_\_  
 Item \_\_\_\_\_  
 Quantity \_\_\_\_\_  
 CSI Section 11400  
 Approval \_\_\_\_\_  
 Date \_\_\_\_\_

Models  
DynaStar



### Standard Features

- Built-in booster heater with Sani-Sure™ final rinse system ensures proper rinse water temperature
- Pumped rinse for consistent rinse pressure
- Adjustable rinse system
  - Econo uses 0.66 gal per rack
  - Turbo uses 0.89 gal per rack
- Automatic tank fill
- Door-actuated start
- Three (3) selectable timed cycles
- Digital LED display
- Onboard digital diagnostics
- Delime cycle
- 17-1/2" (445 mm) vertical chamber clearance
- Triple Wash Arm for consistent reliable washing performance
- Specially designed stainless steel nozzles provide superior cleaning action
- Interchangeable upper and lower wash/rinse arms
- 1 hp stainless steel wash pump motor
- Vent fan control - shuts vent fan off when machine is idle
- Interchangeable scrap baskets
- Low watt density electric wash tank heater
- Hi-limit thermostat and low water protection
- Detergent/rinse additive signal connection fuse box
- Front and side dress panels
- Adjustable bullet feet

### Mandatory Specs

Specify:  
Voltage \_\_\_\_\_

### Options

- No Built-in Booster Heater\*
- 460V Electrical
- Single Phase
- Drain Water Tempering Kit
- 1/2" Pressure Regulator
- Scaltrol
- Water Hammer Arrestor
- Flanged Feet
- Security Package

### Accessories

- 36-Compartment Rack
  - 4-1/8" tall (105 mm)
  - 5-5/8" tall (143 mm)
  - 7" tall (178 mm)
- Combination Rack
- Peg Rack

\* Model without booster heater does not include a pumped rinse

### Specifications

- Uses 0.66 gallons (2.5 liters) of water per rack
- Total automatic (normal) cycle - 58 seconds
- 62 (57)\* racks per hour (normal cycle)
- Built-in 70 °F (38.9 °C) rise booster heater
- 1 hp stainless steel wash pump motor
- Single point connections for all utilities
- Adjustable rinse - Econo or Turbo

- Field convertible from straight through to corner and vice versa (kit required)
- Field convertible from 3-phase to single-phase and vice versa (kit required)
- Durable stainless steel construction
- Uses standard 20" X 20" (508 mm X 508 mm) racks
- 1-year parts and labor warranty

\*Racks per hour calculated with NSF suggested load time of five (5) seconds for door-type (straight thru)



Intertek



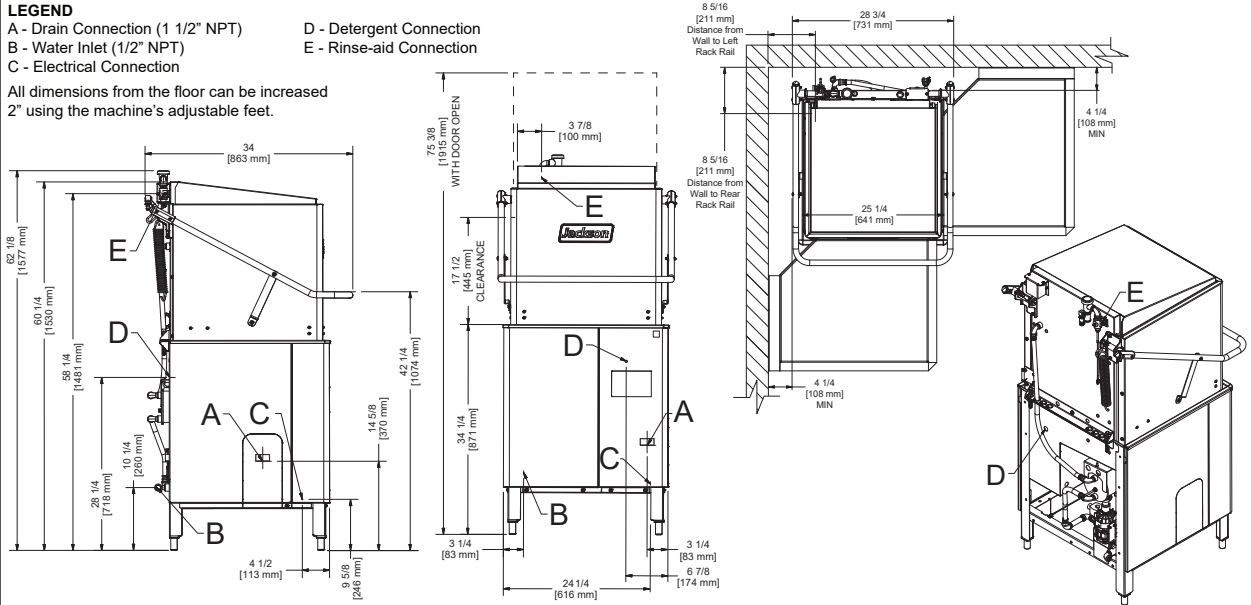
Intertek



### LEGEND

- A - Drain Connection (1 1/2" NPT)
- B - Water Inlet (1/2" NPT)
- C - Electrical Connection
- D - Detergent Connection
- E - Rinse-aid Connection

All dimensions from the floor can be increased 2" using the machine's adjustable feet.



MODEL NO.	MACHINE DIMENSIONS				DRAIN HEIGHT	SHIPPING INFORMATION					
	HEIGHT	WIDTH	WIDTH BETWEEN TABLES	DEPTH		WEIGHT	CLASS	CUBE	HEIGHT	WIDTH	DEPTH
DynaStar	62-1/8" (1577 mm)	28-3/4" (731 mm)	25-1/4" (641 mm)	34" (863 mm)	14-5/8" (370 mm)	366 lbs (166 kg)	150	53.34 cu. ft.	66.5" (1690 mm)	33" (839 mm)	42" (1067 mm)

DIMENSION REQUIREMENTS	
Wall Clearance - Rear (minimum)	4-1/4" (108 mm)
Wall Clearance - Corner Installation Side (minimum)	4-1/4" (108 mm)
Standard Table Height	34-1/4" (871 mm)
Inside Clearance	17-1/2" (445 mm)
Machine Height with Door Open	75-3/8" (1915 mm)

OPERATING CAPACITY			
Racks per Hour	Normal 62 (57)*	Heavy 33 (31)*	Extra Heavy 14 (15)*

OPERATING CYCLE (seconds)	Wash	Rinse	Dwell	Total Cycle
Normal	40	11	7	58
Heavy	90	11	7	108
Extra Heavy	220	11	7	238

ELECTRICAL REQUIREMENTS				
	Power Supply	Total Load	Minimum Circuit Ampacity	Maximum Overcurrent Protection
70 °F Rise	208/60/3	42.2 A	43.4 A	45 A
	230/60/3	46.0 A	47.3 A	50 A
	460/60/3	19.8 A	20.2 A	25 A
	208/60/1	68.8 A	70.1 A	75 A
No Booster	230/60/1	75.5 A	76.7 A	80 A
	208/60/3	16.4 A	17.6 A	20 A
	230/60/3	17.6 A	18.8 A	20 A
	460/60/3	7.5 A	7.8 A	15 A
208/60/1	24.7 A	25.9 A	30 A	30 A
	230/60/1	26.8 A	28.0 A	30 A

WATER REQUIREMENTS		
Inlet Temperature		
70°F (38.9°C) Rise		110 °F (43 °C)
No Booster		180 °F (82 °C)
Gallons per Hour (Econo/Turbo Rinse)	40.92 gal (154.90 L) / 55.18 gal (208.88 L)	
Gallons per Hour (Econo/Turbo Rinse)**	37.62 gal (142.41 L) / 50.73 gal (192.03 L)	
Gallons per Rack (Econo /Turbo Rinse)	0.66 gal (2.5 L) / 0.89 gal (3.4 L)	
Waterline Size IPS (minimum)	1/2"	
Drainline Size IPS (minimum)	1-1/2"	
Flow Pressure (PSI) - No booster only	10 ± 2	
Wash Tank Capacity	8 gal (30 L)	
Booster Tank Capacity	1.66 gal (6.29 L)	

OPERATING TEMPERATURES	
Wash (minimum)	150 °F (66 °C)
Rinse (minimum)	180 °F (82 °C)

MOTORS & HEATERS		
Wash Pump Motor Horsepower 208V and 230V		1
Wash Pump Motor Horsepower 460V		3/4
	Volts	KW
Electric Wash Tank Heater	208V	4.1
	230V	5.0
	460V	5.0
Electric Rinse Tank Heater - 70 °F (38.9 °C) Rise	208V	9.0
	230V	11.0
	460V	9.2

HOW TO SPECIFY: DynaStar

\*Racks per hour calculated with NSF suggested load time of five (5) seconds for door-type (straight thru)  
 \*\*Gallons per hour calculated with NSF suggested load time of five (5) seconds for door-type (straight thru)

**Jackson WWS, Inc.**  
 Shipping Address: 6209 North U.S. Highway 25E, Gray, KY 40734  
 Mailing Address: P.O.Box 1060, Barbourville, KY 40906  
 Telephone: 888-800-5672 • Fax: 606-523-1799  
 Email: info@jacksonwws.com  
 07610-004-69-78 [10/13/2020]

[www.jacksonwws.com](http://www.jacksonwws.com)