

# RackStar<sup>®</sup> 66 with optional Energy Recovery

Project \_\_\_\_\_  
 Item \_\_\_\_\_  
 Quantity \_\_\_\_\_  
 CSI Section 11400  
 Approval \_\_\_\_\_  
 Date \_\_\_\_\_

RackStar<sup>®</sup> 66 with optional Energy Recovery

## Models

### RackStar 66 with optional Energy Recovery



### Standard Features

- Energy Recovery
- Adjustable Rinse System
- 27kW electric booster heater
- Rainbow Rinse™ with arched rinse arm design
- 19-3/4" (502 mm) clearance
- WISR® Cleaning System
- Double-wall insulated doors retain heat, keeping wash water hot & generating less heat in the dishroom
- Self-cleaning wash arms
- Fully automatic, including auto-fill
- Adjustable vent cowl collars
- Exclusive EnergyGuard™ controls
- 22" pre-wash
- Self-draining stainless steel wash pump
- Digital LED control panel
- Strike plate table limit switch
- Large front access for ease of maintenance
- Stainless steel strainer pans
- Splash shields
- Stainless steel frame and legs
- Exhaust vent fan control
- Built-in pressure regulator
- 15kW wash tank heater
- Front dress panel
- Adjustable bullet feet

### Mandatory Specs

Specify Voltage \_\_\_\_\_  
 Specify Direction of Operation:  
 Left to Right  
 Right to Left

### Options

- Single Point Connection
- 23" (584 mm) Unhooded Side Loader
- 30" (762 mm) Unhooded Side Loader
- Flanged Feet
- Prison Package

### Accessories

- 36-Compartment Rack
  - 4-1/8" tall (104 mm)
  - 5 - 5/8" tall (143 mm)
  - 7" tall (178 mm)
- Combination Rack
- Peg Rack
- Sheet Pan Rack
- Drain Water Tempering Kit\*
- Scaltrol
- Water Hammer Arrestor

*\*Requires separate electrical connection*

### Specifications

- Uses 0.35 gallons of water (1.32 liters) per rack in Econo Rinse mode
- Uses 0.52 gallons of water (1.97 liters) per rack in Turbo Rinse mode
- Cleans 223 racks per hour
- Durable stainless steel construction
- 22" (559 mm) pre-wash section has three upper and one lower pre-wash arms



Intertek



Intertek



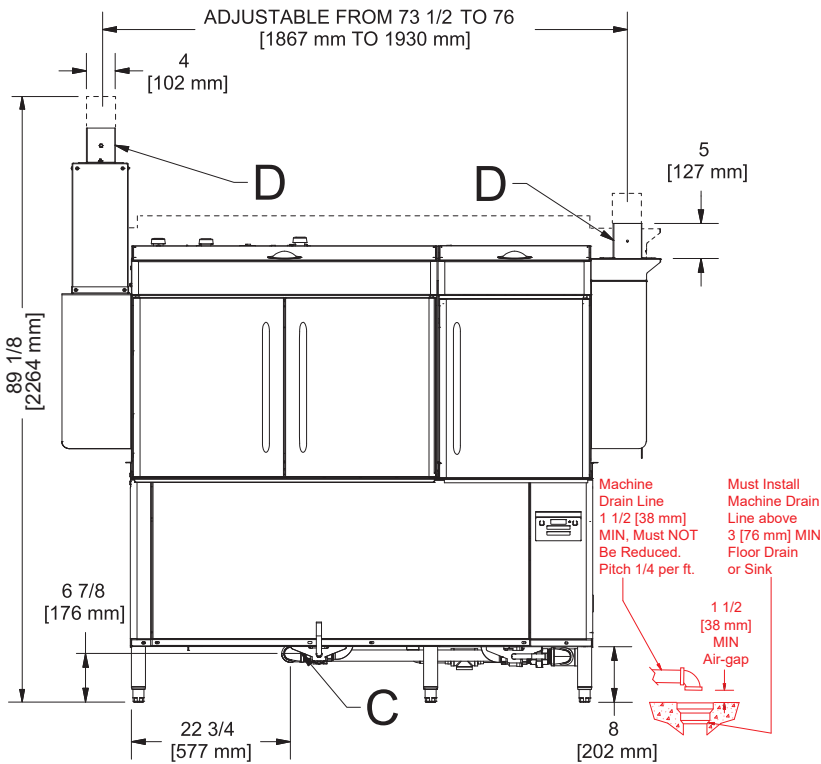
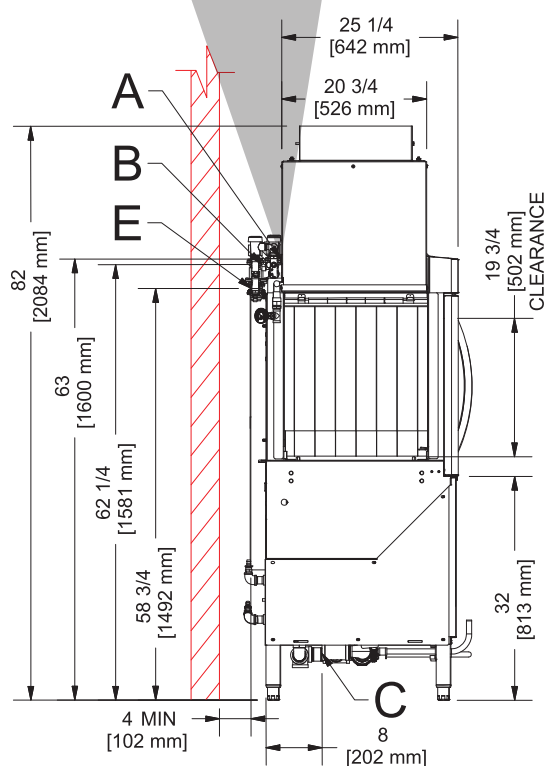
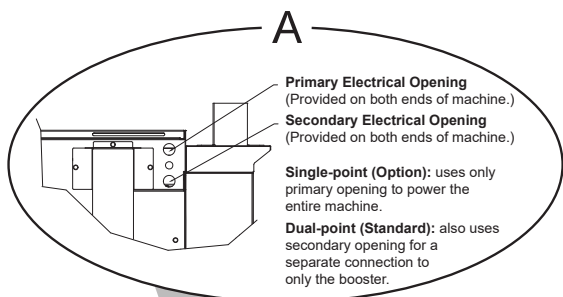
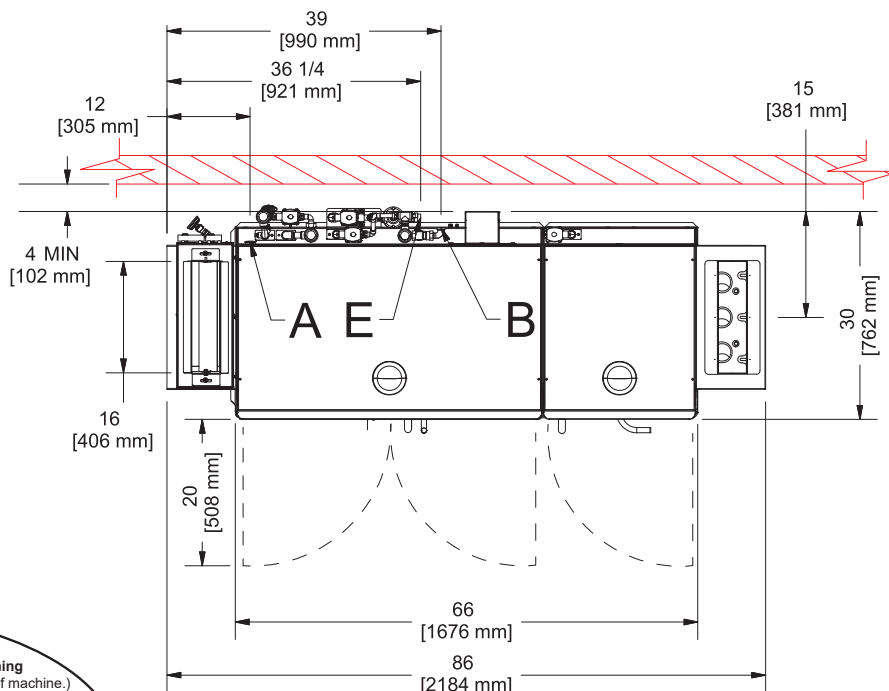


## LEGEND

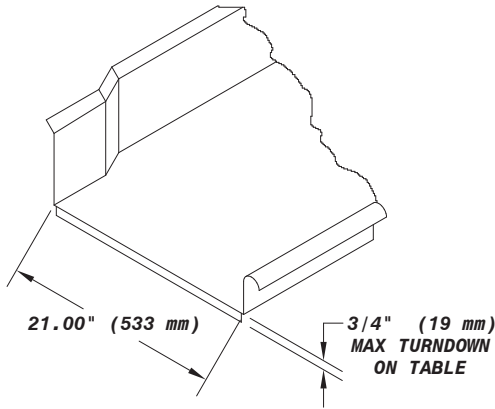
- A - Electrical Connection
- B - Water Inlet  
(1/2" NPT, 110 °F MIN (27 kW Booster))
- C - Drain Connection  
(1 1/2" NPT)
- D - Vent Connections  
(Including Dampers)
- E - Energy Recovery Water Inlet  
(1/2" NPT, 55 °F MIN)
- — — — — - Open Door
- - - - - - - - - - - High Hood Option

All dimensions from the floor can be increased 1 3/4" using the machine's adjustable feet.

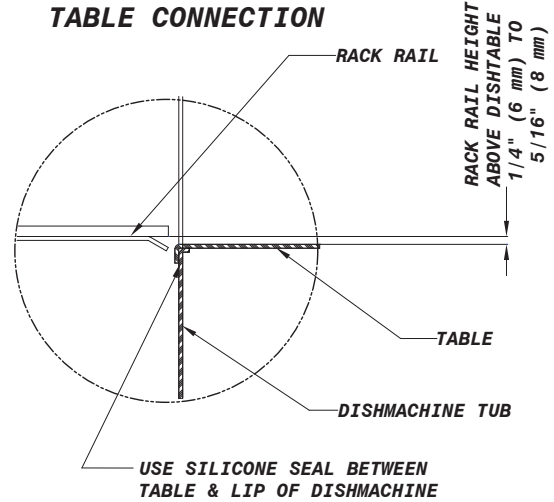
Items in red are not supplied with the machine.



### RECOMMENDED TABLE FABRICATION



### TABLE CONNECTION



| MODEL NO.      | MACHINE DIMENSIONS |                           |              |                       | DRAIN HEIGHT    | SHIPPING INFORMATION |       |                |               |               |               |
|----------------|--------------------|---------------------------|--------------|-----------------------|-----------------|----------------------|-------|----------------|---------------|---------------|---------------|
|                | HEIGHT             | LENGTH BETWEEN DISHTABLES | DEPTH        | DEPTH WITH DOORS OPEN |                 | WEIGHT               | CLASS | CUBE           | HEIGHT        | WIDTH         | DEPTH         |
| RackStar 66 ER | 82" (2084 mm)      | 66" (1676 mm)             | 30" (762 mm) | 50" (1270 mm)         | 6-1/2" (165 mm) | 1193 lbs (542 kg)    | 150   | 166.67 cu. ft. | 75" (1905 mm) | 96" (2439 mm) | 40" (1016 mm) |

| OPERATING CAPACITY |       |
|--------------------|-------|
| Racks per Hour     | 223   |
| Dishes per Hour    | 5,575 |
| Glasses per Hour   | 8,028 |

| WATER REQUIREMENTS                     |                   |
|--|-------------------|
| Hot water inlet temperature (minimum)  | 110° F (43° C)    |
| Cold water inlet temperature (minimum) | 55° F (43° C)     |
| Gallons per Hour (Econo Rinse mode)    | 78 gal (295 L)    |
| Gallons per Hour (Turbo Rinse mode)    | 116 gal (239.1 L) |
| Gallons per Rack (Econo Rinse mode)    | 0.35 gal (1.3 L)  |
| Gallons per Rack (Turbo Rinse mode)    | 0.52 gal (1.97 L) |
| Waterline Size NPT                     | 1/2"              |
| Drainline Size IPS (minimum)           | 1-1/2"            |
| Flow Pressure (PSI)                    | 15                |
| Flow Rate GPM (minimum)                | 1.3 (4.9 LPM)     |
| Wash Tank Capacity                     | 25 gal (95 L)     |

| OPERATING TEMPERATURES |                        |
|------------------------|------------------------|
| Pre-wash (minimum)     | 110 -140° F (43-60° C) |
| Wash (minimum)         | 160° F (71° C)         |
| Rinse (minimum)        | 180° F (82° C)         |

| ELECTRICAL REQUIREMENTS        |            |                          |                                |
|--------------------------------|------------|--------------------------|--------------------------------|
| Power Supply                   | Total Load | Minimum Circuit Ampacity | Maximum Overcurrent Protection |
| <b>SINGLE POINT CONNECTION</b> |            |                          |                                |
| 208/60/3                       | 133.0 A    | 135.3 A                  | 140 A                          |
| 230/60/3                       | 115.5 A    | 117.6 A                  | 125 A                          |
| 460/60/3                       | 57.9 A     | 59.0 A                   | 60 A                           |
| 208/60/1                       | 227.0 A    | 230.4 A                  | 240 A                          |
| 230/60/1                       | 195.1 A    | 198.2 A                  | 210 A                          |
| <b>DUAL POINT CONNECTION</b>   |            |                          |                                |
| 208/60/3 - Machine             | 58.1 A     | 60.4 A                   | 65 A                           |
| 208/60/3 - 27kW Booster        | 74.9 A     | 76.2 A                   | 80 A                           |
| 230/60/3 - Machine             | 50.5 A     | 52.6 A                   | 60 A                           |
| 230/60/3 - 27kW Booster        | 65.0 A     | 66.3 A                   | 70 A                           |
| 460/60/3 - Machine             | 25.4 A     | 26.5 A                   | 30 A                           |
| 460/60/3 - 27kW Booster        | 32.5 A     | 33.8 A                   | 35 A                           |
| 208/60/1 - Machine             | 97.2 A     | 100.6 A                  | 110 A                          |
| 208/60/1 - 27kW Booster        | 129.8 A    | 131.1 A                  | 135 A                          |
| 230/60/1 - Machine             | 82.7 A     | 85.7 A                   | 95 A                           |
| 230/60/1 - 27kW Booster        | 112.5 A    | 113.8 A                  | 115 A                          |

| WASH PUMPS             |                    |
|------------------------|--------------------|
| Pre-wash Pump Motor    | 2 hp               |
| Pre-wash Pump Capacity | 220 GPM (833 LPM)  |
| Wash Pump Motor        | 3 hp               |
| Wash Pump Capacity     | 270 GPM (1022 LPM) |

| CONVEYOR                         |                     |
|----------------------------------|---------------------|
| Conveyor Motor                   | 1/4 hp              |
| Conveyor Speed (feet per minute) | 6.07 FPM (1.85 MPM) |

| VENTING REQUIREMENTS |         |
|----------------------|---------|
| Input End            | 175 CFM |
| Output End           | 175 CFM |
| Total CFM            | 350 CFM |

HOW TO SPECIFY: RackStar 66 with Energy Recovery

**Jackson WWS, Inc.**  
 Shipping Address: 6209 North U.S. Highway 25E, Gray, KY 40734  
 Mailing Address: P.O. Box 1060, Barbourville, KY 40906  
 Telephone: 888-800-5672 • Fax: 606-523-1799  
 Email: info@jacksonwws.com  
 07610-004-43-17 [12/04/2020]

www.jacksonwws.com

We reserve the right to change specifications in this bulletin without incurring any obligation for equipment previously or subsequently sold.