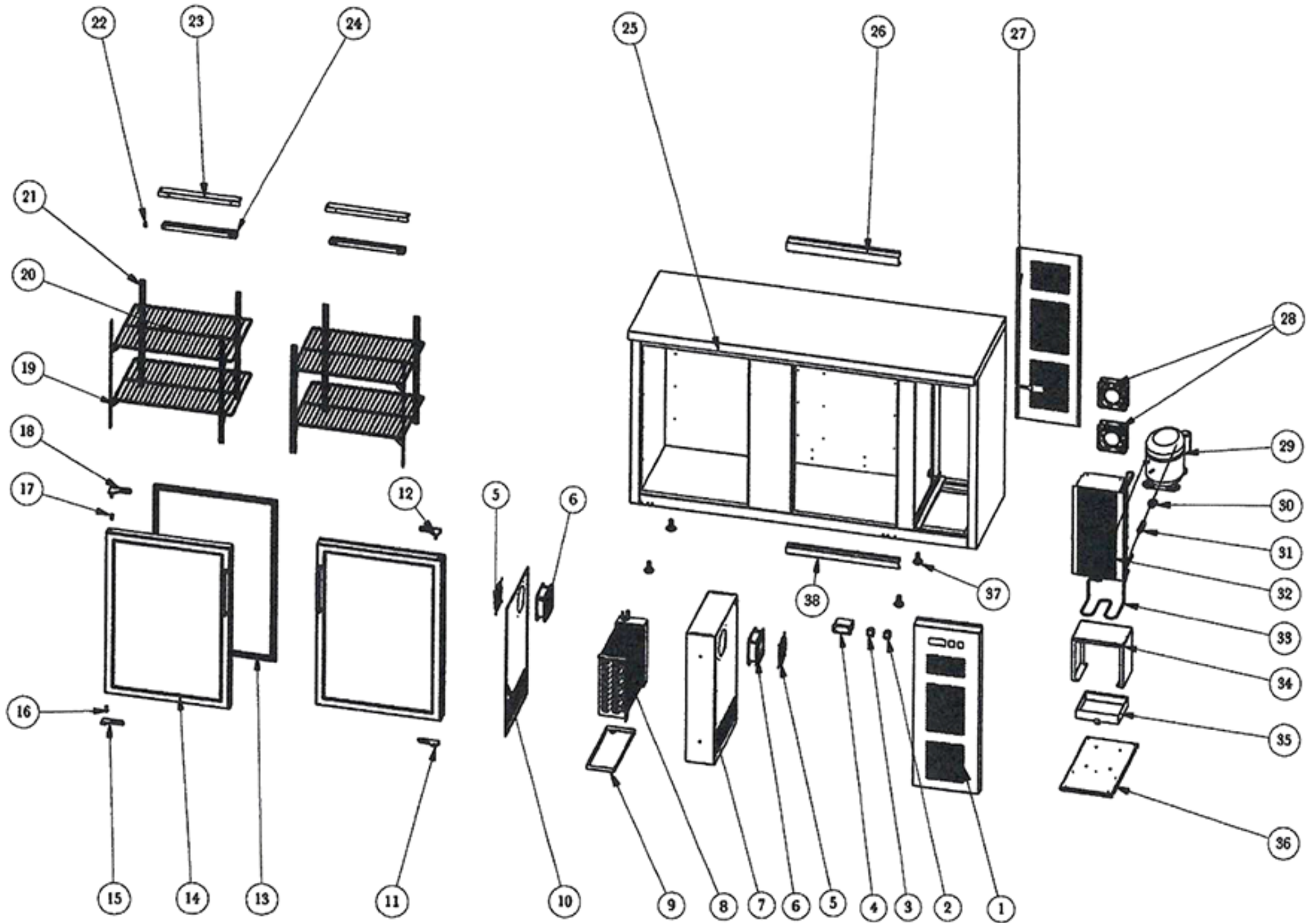
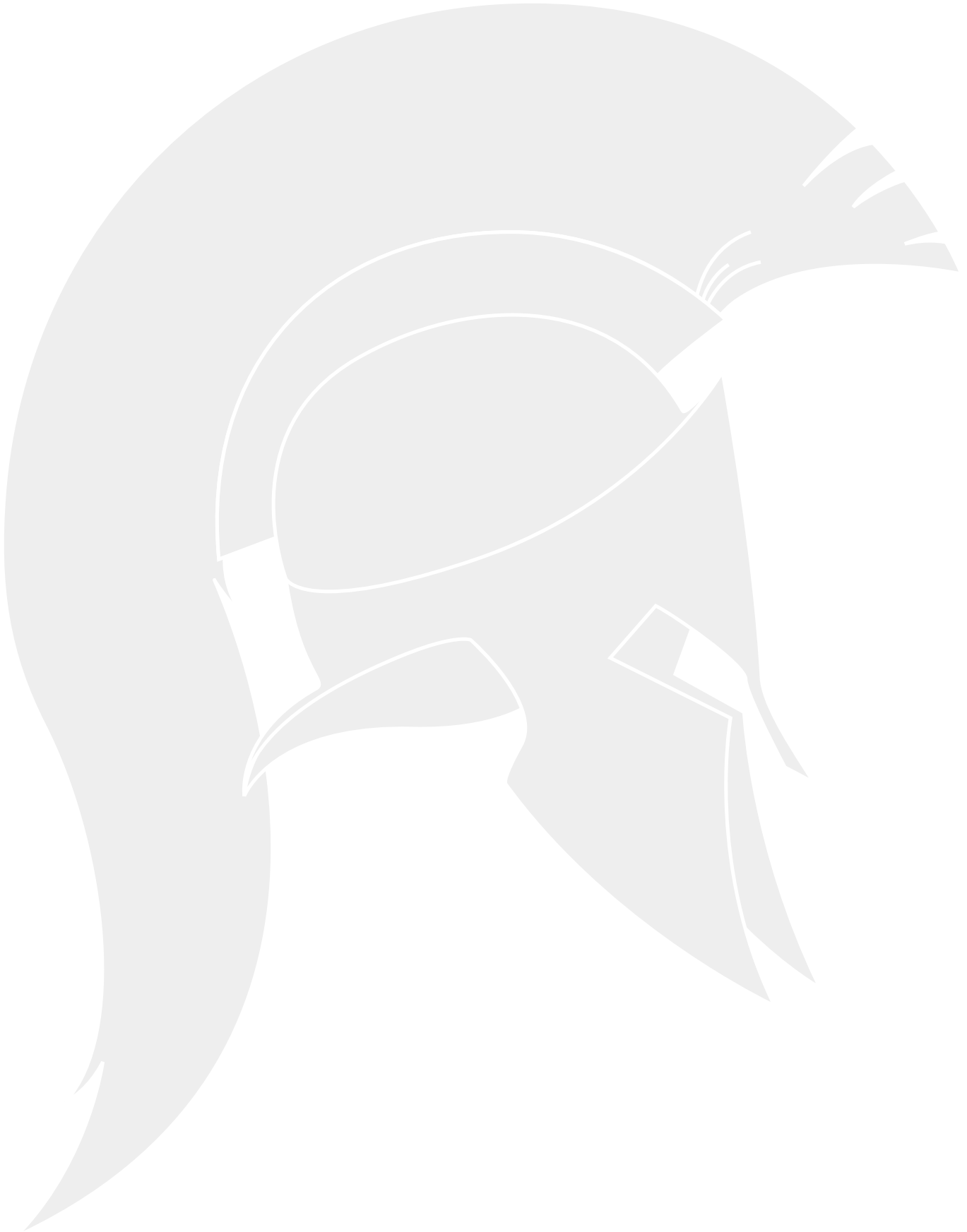


58" Back Bar



Part #	Part Name	Part Qty
1	Control Panel	1
2	Power Switch	1
3	Light Switch	1
4	Thermostat	1
5	Fan Cover	1
6	Evaporator Fan Motor	2
7	Middle Beam Vent Frame	1
8	Evaporator	1
9	Inner Drain Pan	1
10	Shell	1
11	Bottom Right Hinge	1
12	Upper Right Hinge	1
13	Gasket	2
14	Left Glass Door	1
14	Right Glass Door	1
15	Bottom Left Hinge	1
16	Bottom Axis Cover	2
17	Upper Axis cover	2
18	Upper Left Hinge	1
19	K Clip	16
20	Shelf	4
21	K Strip	8
22	Light Clip	2
23	Light Fixture	2
24	Light	2
25	Box	1
26	Air Hose Cover Plate	1
27	Back Grill	1
28	Condenser Fan Motor	2
29	Compressor	1
30	Cap Tube	1
31	Filter Drier	1
32	Condenser	1
33	Compressor Unit connecting Pipe	1
34	Condenser Mounting Bracket	1
35	Outer drain Pan	1
36	Compressor Unit Installation Board	1

37	Leveling Feet	4
38	Pipe Cover Olate	1



TECHNICAL DATA

Dimensions

Exterior Dimensions (WxDxH)	57.6" x 20.5" x 33.9"
Interior Dimensions (WxDxH)	42.6" x 16.5" x 29.5"
Net Volume (cu. ft.)	12 cu. ft.
Gross Weight	229 lbs
Packaging Dimensions (WxDxH)	60" x 23" x 39.5"

Cooling

Temperature Range	33° - 40° F
Refrigerant	R290
Maximum Ambient Temperature Rating	90° F
Defrosting	Automatic
Temperature Display	Yes
Temperature Controller	Digital
H/P	1/4+

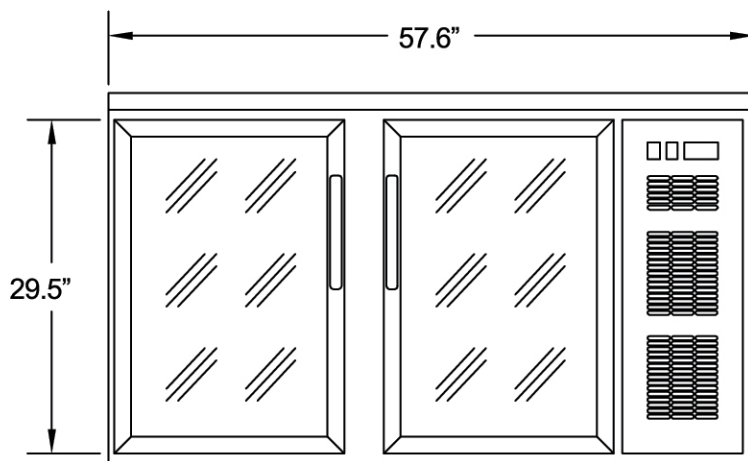
Construction

Exterior Material	430 series stainless steel
Interior Material	304 series stainless steel
Insulation Material	Foamed in place polyurethane
Shelf Load Capacity	90 lbs
Handles only on Models	SGBBB-58-SL/SSGBB-58-SI

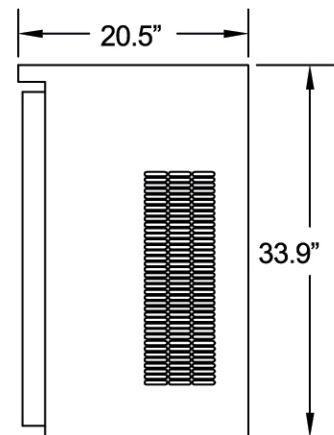
Electrical

Voltage	110
Amps	2.6
Hz	60
Phase	1

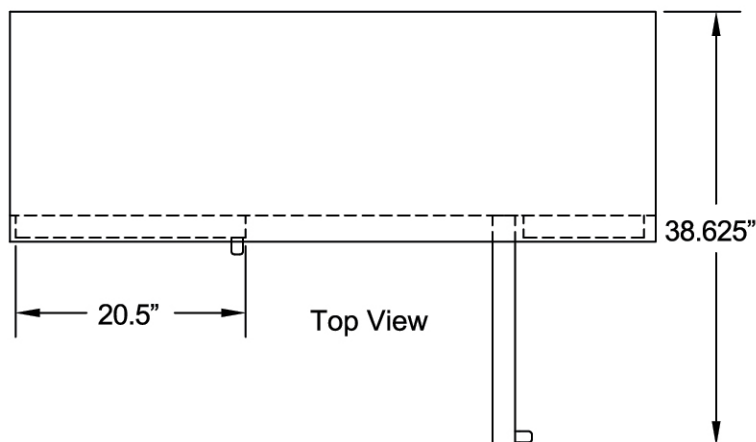
PLAN VIEW



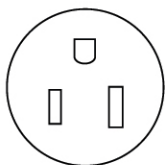
Front View



Side View



Top View



NEMA 5-15