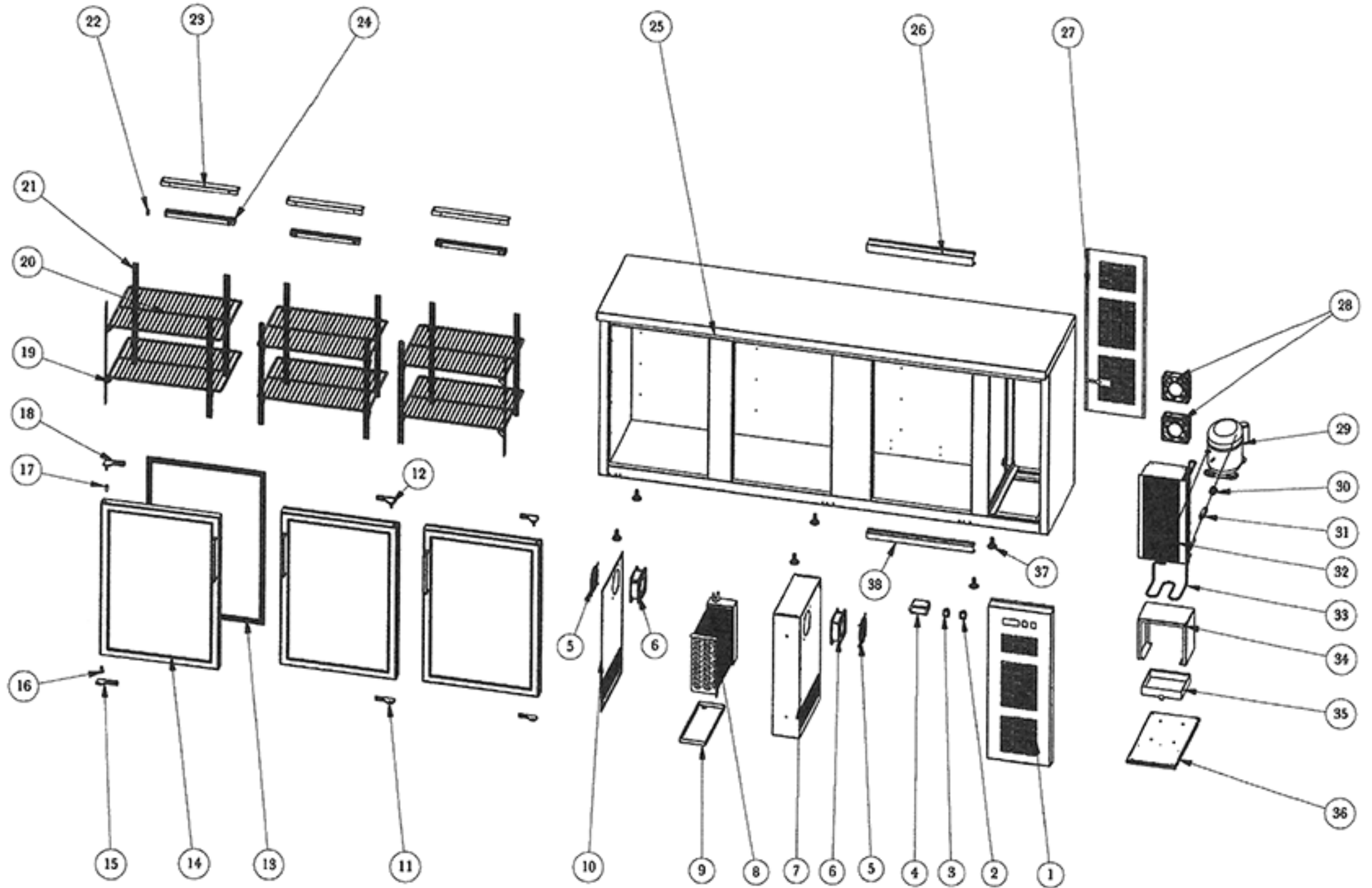


79" Back Bar



Part #	Part Name	Part Qty
1	Control Panel	1
2	Power Switch	1
3	Light Switch	1
4	Thermostat	1
5	Fan Cover	1
6	Evaporator Fan Motor	2
7	Middle Beam Vent Frame	1
8	Evaporator	1
9	Inner Drain Pan	1
10	Shell	1
11	Bottom Right Hinge	2
12	Upper Right Hinge	2
13	Gasket	3
14	Left Glass Door	1
14	Right Glass Door	2
15	Bottom Left Hinge	1
16	Bottom Axis Cover	3
17	Upper Axis Cover	3
18	Upper Left Hinge	1
19	K Clip	24
20	Left & Middle Shelf	4
20	Right Shelf	2
21	K Strip	12
22	Light Clip	3
23	Light Fixture	3
24	Light	3
25	Cabinet	1
26	Air Hose Cover Plate	1
27	Back Grill	1
28	Condenser Fan Motor	2
29	Compressor	1
30	Cap Tube	1
31	Filter Drier	1
32	Condenser	1
33	Compressor Unit connecting Pipe	1
34	Condenser Mounting Bracket	1
35	Outer Drain Pan	1

36	Compressor Unit Installation Board	1
37	Leveling Feet	6
38	Pipe Cover Olate	1



TECHNICAL DATA

Dimensions

Exterior Dimensions (WxDxH)	78.8" x 20.5" x 33.9"
Interior Dimensions (WxDxH)	63.9" x 16.5" x 29.5"
Net Volume (cu. ft.)	18 cu. ft.
Gross Weight	310 lbs
Packaging Dimensions (WxDxH)	81" x 23" x 39.5"

Cooling

Temperature Range	33° - 40° F
Refrigerant	R290
Maximum Ambient Temperature Rating	90° F
Defrosting	Automatic
Temperature Display	Yes
Temperature Controller	Digital
H/P	1/3+

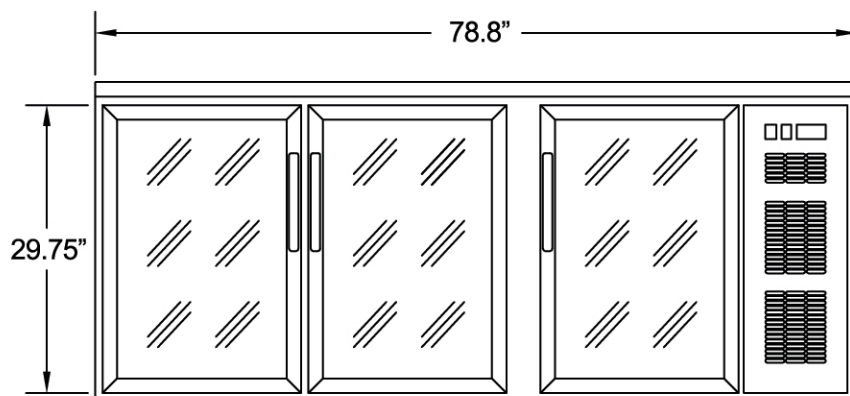
Construction

Exterior Material	430 series stainless steel
Interior Material	304 series stainless steel
Insulation Material	Foamed in place polyurethane
Shelf Load Capacity	90 lbs
Handles only on Models	SGBBB-79-SL/SSGBB-79-SL

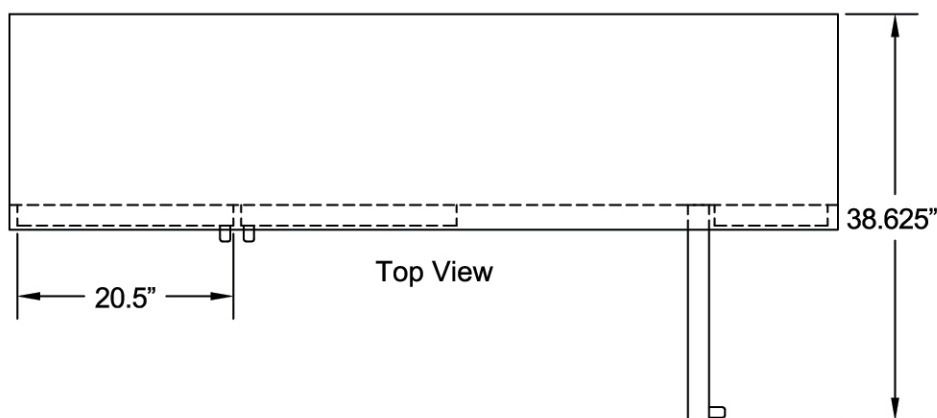
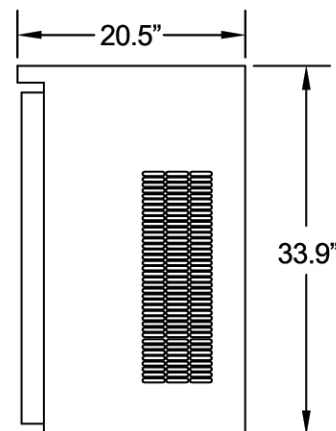
Electrical

Voltage	110
Amps	3.5
Hz	60
Phase	1

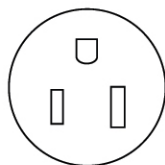
PLAN VIEW



Front View



Top View



NEMA 5-15