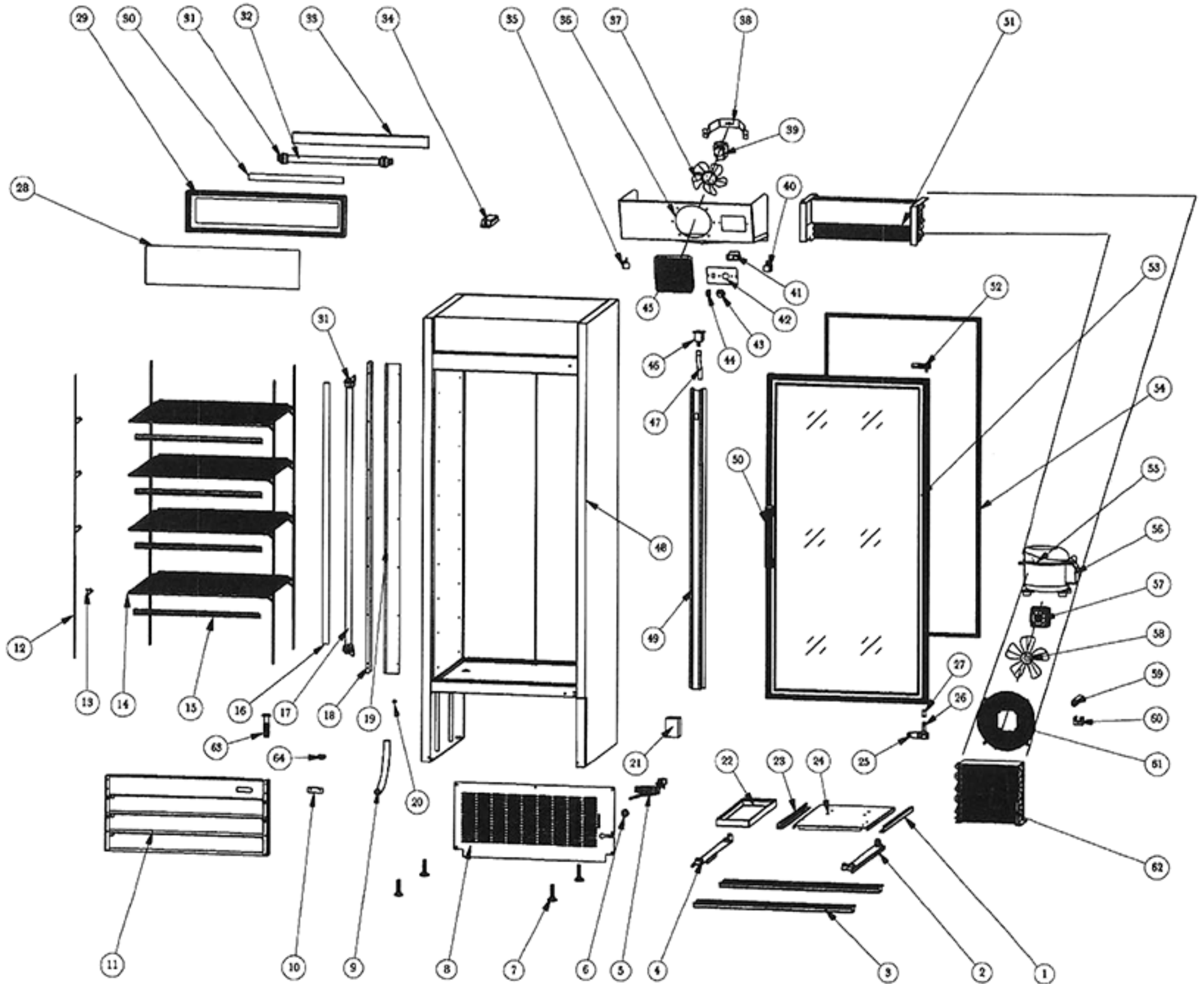


SGM-23RV



Part #	Part Name	Part Qty
1	Right Track For Installation Board	1
2	Right Connecting Board For Castor	1
3	Castor Supporter	2
4	Left Connecting Board For Castor	1
5	Power Cord	1
6	Power Cord Cover	1
7	Adjust Feet	4
8	Back Grill	1
9	Drain Tube (φ20mm)	1
10	Fahrenheit Temp Display	1
11	Front Grill	1
12	K Strip (9 Holes)	4
13	K Clip	16
14	Shelf	4
15	Shelf Tag	4
16	Lamp Cover 1 (36W)	1
17	Lamp (36W)	1
18	Inner Lamp Installation Board	1
19	Lamp Baffle	1
20	Drain Pipe Cover	1
21	Transformer For Fahrenheit Temp Display	1
22	Outer Drain Pan	1
23	Left Track For Installation Board	1
24	Compressor Installation Board	1
25	Bottom Hinge	1
26	Hinge Axis	1
27	Axis Cover	2
28	Lamp Box Plate	1
29	Lamp Box Frame	1
30	Lamp Cover 2 (18W)	1
31	Lamp Socket	4
32	Lamp (18W)	1
33	Outer Lamp Installation Board	1
34	Ballast	1
35	Left Bracket For Evaporation Fan Cover	1
36	Evaporator Fan Cover	1
37	Evaporator Fan Cover Blade	1

38	Evaporator Fan Cover Bracket	1
39	Evaporator Fan Motor	1
40	Right Bracket For Evaporator Fan Cover	1
41	Mechanical Controller	1
42	Controller Plate	1
43	Controller Knob	1
44	Power Switch	1
45	Evaporator Fan Motor Cover	1
46	Drain Connector	1
47	Inner Drain Tube (φ13mm)	1
48	Cabinet	1
49	Back Plate	1
50	Glass Door Handle	1
51	Evaporator	1
52	Upper Hinge	1
53	Glass Door	1
54	Glass Door Gasket	1
55	Compressor (6187)	1
56	Compressor Component	1
57	Condenser Fan Motor	1
58	Condenser Fan Motor Blade	1
59	Filter	1
60	Filter Fixer	1
61	Condenser Fan Motor Cover	1
62	Condenser	1
63	Drain Pipe	1
64	Drain Tube Fixer	1

TECHNICAL DATA

Dimensions

Exterior Dimensions (WxDxH)	28.5" x 32" x 79"
Interior Dimensions (WxDxH)	25" x 28" x 55"
Net Volume (cu. ft.)	24 cu. ft.
Gross Weight	361 lbs
Packaging Dimensions (WxDxH)	30.25" x 34.25" x 85"

Cooling

Temperature Range	33° - 40° F
Refrigerant	R290
Maximum Ambient Temperature Rating	90° F
Defrosting	Automatic
Temperature Display	Yes
Temperature Controller	Mechanical
H/P	1/3

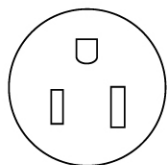
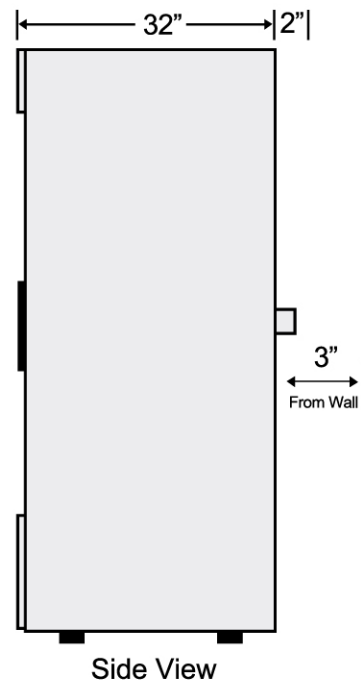
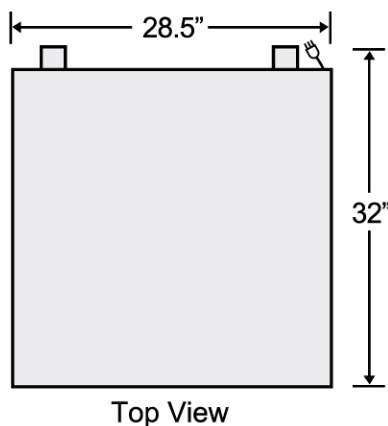
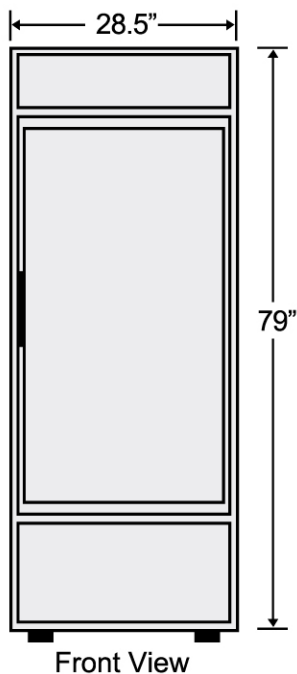
Construction

Exterior Material	Painted steel
Door/Lid Material	Glass Door
Insulation Material	Foamed in place polyurethane
Shelf Material	Plastic coated steel
Shelf Load Capacity	90 lbs

Electrical

Voltage	120
Amps	7.6
Hz	60
Phase	1

PLAN VIEW



NEMA 5-15