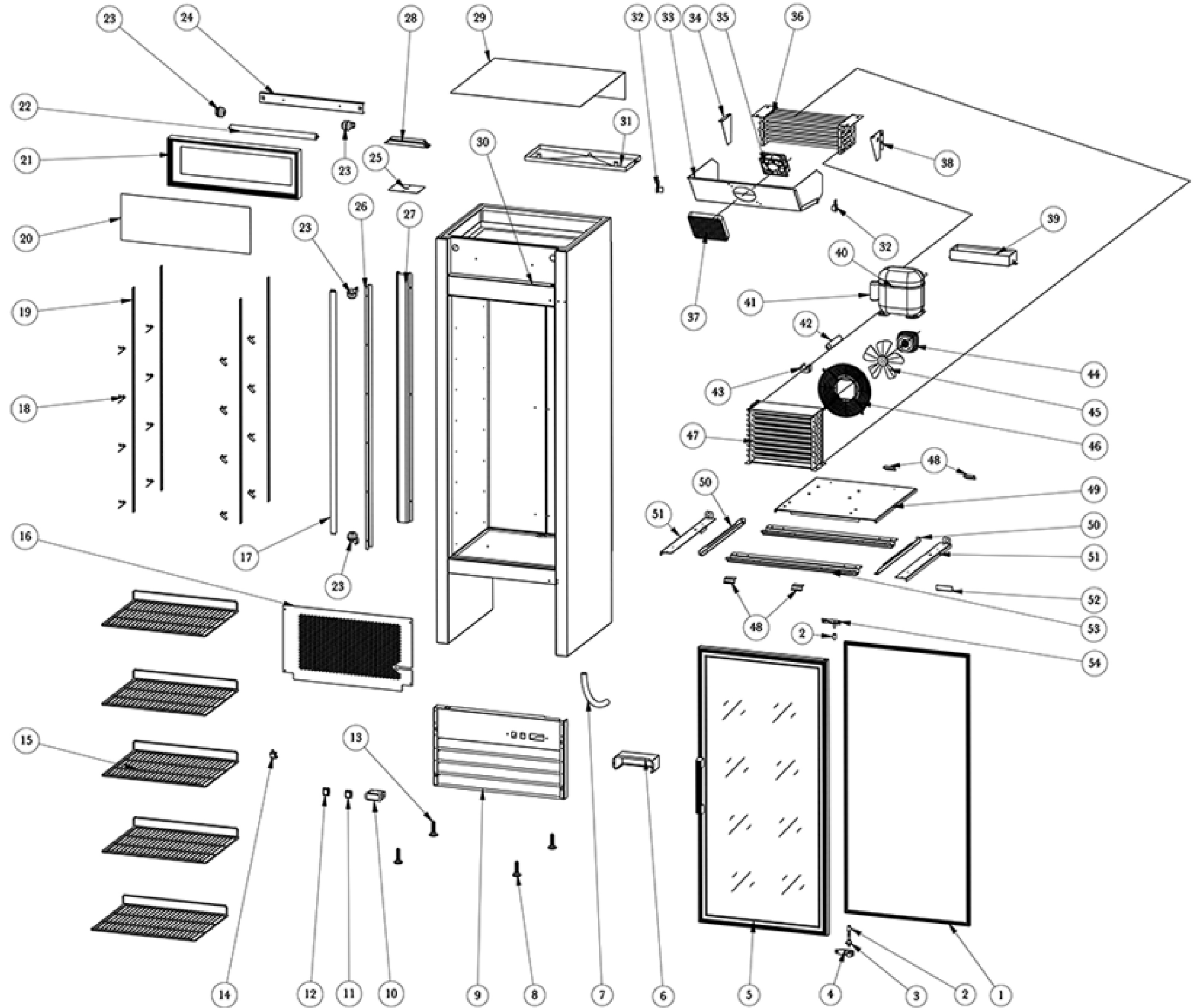


SGM-26RS



Part #	Part Name	Specifications	Part Qty	Factory Parts NO.
1	Gasket	1330*620mm	1	G36801
2	Axis Cover		2	25848
3	Bottom Hinge Axis		1	25847
4	Bottom Hinge		1	25846
5	Glass Door	1360*650mm	1	G36802
6	Waterproof Cover		1	DC1229
7	Drain Pipe		1	25808
8	4" Castor With Brake(With Baseplate)		1	CFD1RR-32
#	Grill		2	36803
10	Thermostat	PZGXS0J111	1	CFD1RR-54
11	Light Switch	Green	1	76811
12	Power Switch	Red	1	CFD1RR-25
13	4" Castor Without Brake(W/ Baseplate)		2	CFD1RR-33
14	Door Touch Switch		1	CFD1RR-30
15	Shelf	530*450mm	4	36805
16	Rhombus Cover		1	36804
17	Led Light Inside Cabinet	PW3W-72A/1200mm	1	64838
18	K Clip		16	25819
19	K Strip		4	47010
20	Lamp Box Plate		1	36806
21	Lamp Box Frame		1	36807
22	Led Light Inside Lamp Box	JL 500MM	1	G36803
23	Lamp Socket		4	25815
24	Fluorescent Lamp Mounting Plate		1	64821
25	Wire Protection Plate Cover		1	76827
26	Lamp Mounting Plate		1	64821
27	Baffle for Return Air Pipe		1	64813
28	Power for Led	LPV-35-12	1	25854
29	Top Cover Plate		1	G36804
30	Cabinet		1	N/A
31	Inner Drain Pan		1	G36805
32	Bracket For Evaporator Fan Motor Cover		1	64822
33	Evaporator Fan Motor Cover		1	36811
34	Left Bracket for Evaporator Fan Motor		1	36812
35	Evaporator Fan Motor	4715MS-12T-B5A	1	CFD1RR-23
36	Evaporator	6R7K375L	1	36813

37	Evaporator Fan Motor Cover		1	25843
38	Right Bracket For Evaporator Fan Motor		1	36814
39	Outer Drain Pan		1	G36806
40	Compressor	NE6187Z	1	64835
41	Compressor Starting Components		1	64836
42	Filter Drier		1	25834
43	Filter Drier Fixer		1	CFD1RR-44
44	Condenser Fan Motor	M4Q045 CA27-04 φ230 V28	1	CFD1RR-41
45	Fan Blade	φ230 V28	1	CFD2RR-43
46	Fan Cover		1	64825
47	Condenser	3R10K310L	1	36824
48	Limited Block For Installation Board		4	25826
49	Installation Board For Compressor Unit		1	36815
50	Left Rail for Mounting Plate		1	36818
50	Right Rail for Mounting Plate		1	36816
51	Connecting Board For Caster		2	G36807
52	Mounting Plate Stopper		1	25849
53	Support Rod		2	36817
54	Top Hinge		1	64832

TECHNICAL DATA

Dimensions

Exterior Dimensions (WxDxH)	26" x 25.5" x 84.5"
Interior Dimensions (WxDxH)	21" x 21" x 49"
Net Volume (cu. ft.)	14 cu. ft.
Gross Weight	264 lbs
Packaging Dimensions (WxDxH)	29" x 28.5" x 86"
Electrical Cord Length	84"

Cooling

Temperature Range	33° - 40° F
Refrigerant	R290
Maximum Ambient Temperature Rating	90° F
Defrosting	Automatic
Temperature Display	Yes
Temperature Controller	Digital
H/P	1/4

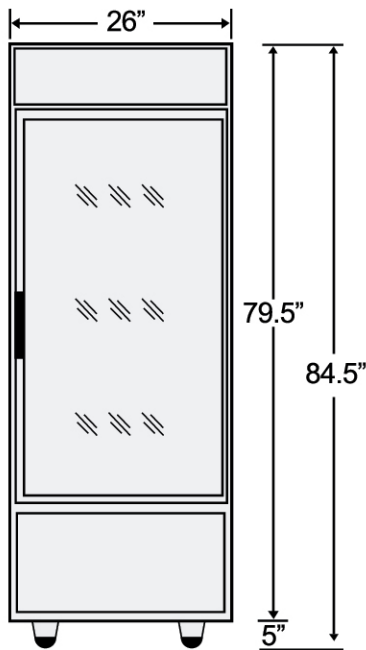
Construction

Exterior Material	Painted steel
Door/Lid Material	Glass Door
Insulation Material	Foamed in place polyurethane
Shelf Material	Plastic coated steel
Shelf Load Capacity	90 lbs

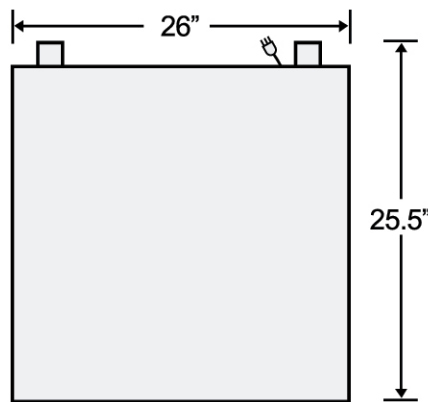
Electrical

Voltage	120
Amps	5.2
Hz	60

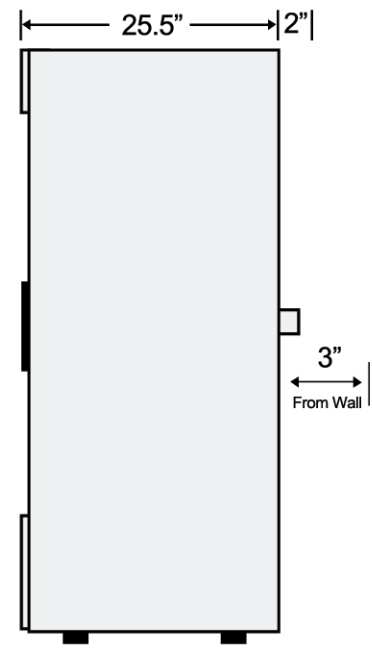
PLAN VIEW



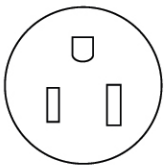
Front View



Top View



Side View



NEMA 5-15