

TECHNICAL DATA

Dimensions

Exterior Dimensions (WxDxH)	53" x 32" x 83.75"
Interior Dimensions (WxDxH)	49" x 25.5" x 54"
Net Volume (cu. ft.)	47 cu. ft.
Gross Weight	440 lbs
Packaging Dimensions (WxDxH)	54.5" x 33" x 84.5"

Cooling

Temperature Range	33° - 40° F
Refrigerant	R290
Maximum Ambient Temperature Rating	90° F
Defrosting	Automatic
Temperature Display	Yes
Temperature Controller	Mechanical
H/P	1/2

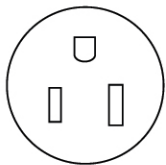
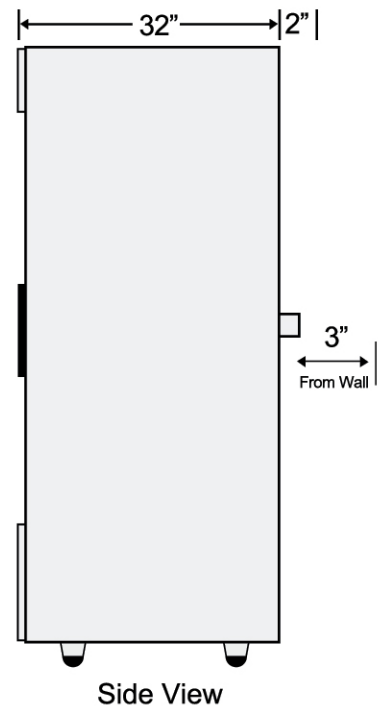
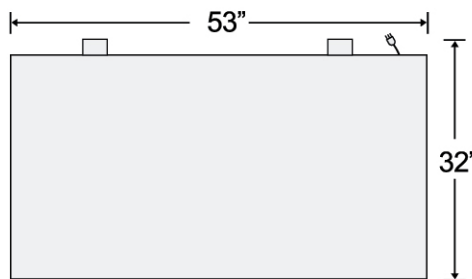
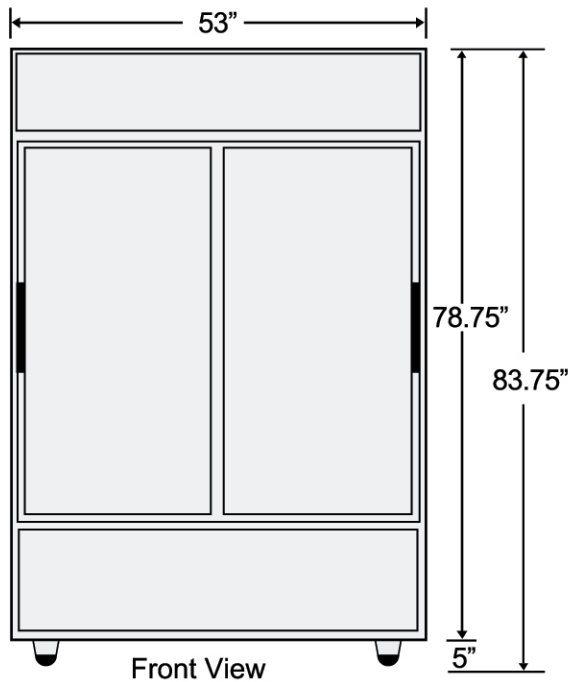
Construction

Exterior Material	Painted steel
Door/Lid Material	Glass Door
Insulation Material	Foamed in place polyurethane
Shelf Material	Plastic coated steel
Shelf Load Capacity	90 lbs

Electrical

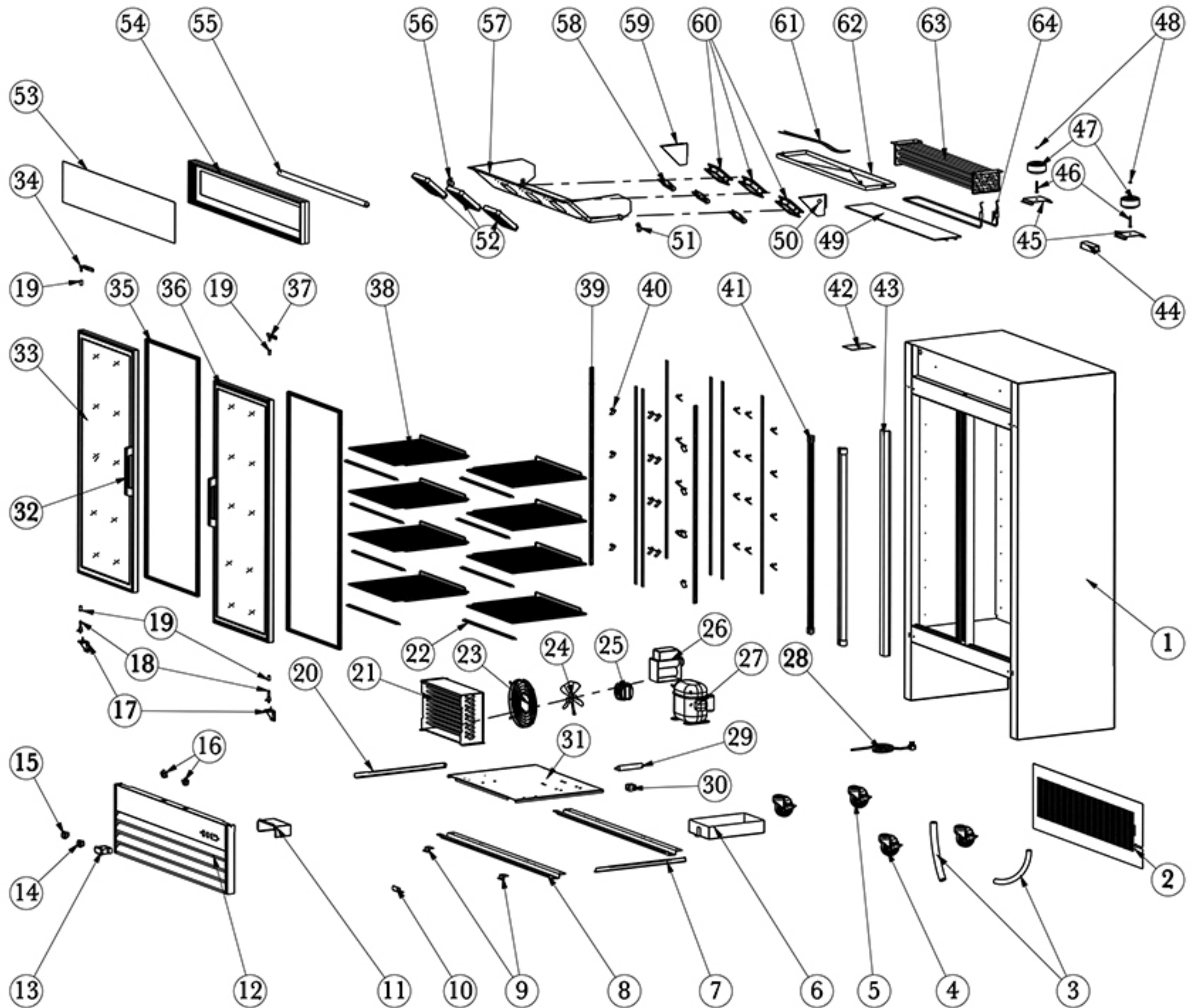
Voltage	120
Amps	11.2
Hz	60
Phase	1

PLAN VIEW



NEMA 5-15

SGM-53R



NO.	Part Name	Factory Part NO.	QTY
1	LEFT GLASS DOOR	14201641294	1
2	FRONT GRILL FIXER	12555000001	2
3	POWER CORD COVER	16349150001	1
4	COMPRESSOR COMPONENT		1
5	COMPRESSOR	17202163125	1
6	CONDENSER FAN MOTOR	22752520004	1
7	CONDENSER FAN MOTOR BLADE	16381738112	1
8	CONDENSER FAN COVER		1
9	CONDENSER	17304100381	1
10	LED SWITCH	17749180002	1
11	POWER SWITCH	17749211297	1
12	CASTER SUPPORTER		2
13	HANDLE FOR INSTALLATION BOARD		1
14	LIMIT BLOCK FOR INSTALLATION BOARD		1
15	SUPPORT ROD		3
16	THERMOSTAT	17505180005	1
17	CASTER WITHOUT BREAK	12533040420	2
18	CASTER WITH BREAK	12533070420	2
19	BACK GRILL		1
20	WATERPROOF COVER OF THERMOSTAT	16351170004	1
21	FRONT GRILL		1
22	SHELF TAG	16311010545	8
23	K CLIP	5302000003	32
24	K STRIP		8
25	SHELF	12502010134	8
26	LIGHT PLATE	16317231310	1
27	LIGHT BOX	12901241319	1
28	LED LIGHT	17740410071	1
29	LED LIGHT IN LIGHT BOX	17740410075	1
30	OUTER DRAIN PAN	16369690076	1
31	LEFT TRACK FOR INSTALLATION BOARD		1
32	COMPRESSOR UNIT INSTALLATION BOARD		1
33	CABINET		1
34	LED POWER SUPPLY	22753530010	1
35	LEFT BRACKET FOR EVAPORATOR FAN COVER		1
36	EVAPORATOR COVER		1
37	LEFT END PLATE FOR EVAPORATOR		1
38	EVAPORATOR	17405070746	1
39	EVAPORATOR INSTALLATION BRACKET	22719190001	1
40	RIGHT END PLATE FOR EVAPORATOR		1
41	RIGHT BRACKET FOR EVAPORATOR FAN COVER		1

42	POWER CORD COVER	16349180033	1
43	EVAPORATOR FAN MOTOR	22752520015	2
44	EVAPORATOR FAN MOTOR BLADE	16381738012	2
45	EVAPORATOR FAN COVER	12504050002	1
46	RIGHT TRACK FOR INSTALLATION BOARD		1
47	FILTER FIXER	16369690257	1
48	FILTER	17111250198	1
49	DRAIN TUBE	15818180013	1
50	DRAIN CONNECTOR	16369330055	1
51	UPPER/BOTTOM CABINET FRAME	16303011224	2
52	RUBBER LIMITED BLOCK	16410070001	2
53	SEAL STRIP	16402020047	2
54	LEFT/RIGHT CABINET FRAME	16303031360	2
55	RIGHT GLASS DOOR	14201711446	1
56	BIGGER WHEEL FOR DOOR	12533090003	2
57	SMALLER WHEEL FOR DOOR	12533090004	2
58	DOOR TRACK		2
59	DOOR HANDLE	16337030002	2
60	AIR PIPE PROTECTION BOARD		1
61	POWER CORD	17664640052	1
62	GRILL FIXER		2
63	DRAIN PIPE	15818180020	1
64	DRAIN PLUG	16369260001	1
65	PLASTIC DRAIN TUBE	15810020900	1