

TECHNICAL DATA

Dimensions

Exterior Dimensions (WxDxH)	29" x 32.25" x 82.5"
Interior Dimensions (WxDxH)	24.5" x 27" x 60.25"
Net Volume (cu. ft.)	23 cu. ft.
Gross Weight	351 lbs
Packaging Dimensions (WxDxH)	31.5" x 34.5" x 83.5"

Construction

Exterior Material	430 series stainless steel
Interior Material	304 series stainless steel
Insulation Material	Foamed in place polyurethane
Shelf Material	Plastic coated steel
Shelf Load Capacity	120 lbs

Cooling

Temperature Range	-7.5° - 0° F
Refrigerant	R290
Maximum Ambient Temperature Rating	90° F
Defrosting	Automatic
Temperature Display	Yes
Temperature Controller	Digital
H/P	1/2

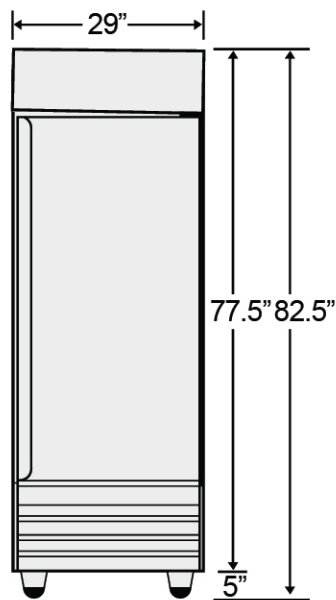
Electrical

Voltage	120
Amps	8.6
Hz	60
Phase	1

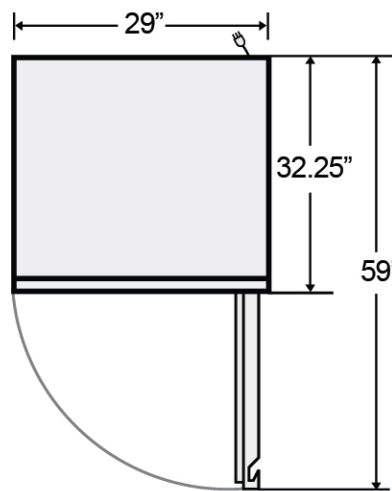
PLAN VIEW



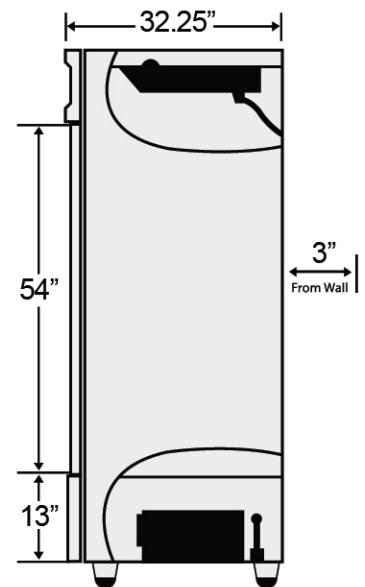
COMPLIES WITH ANSI/NSF 7 FOR FOOD SERVICE



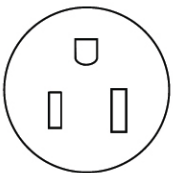
Front View



Top View

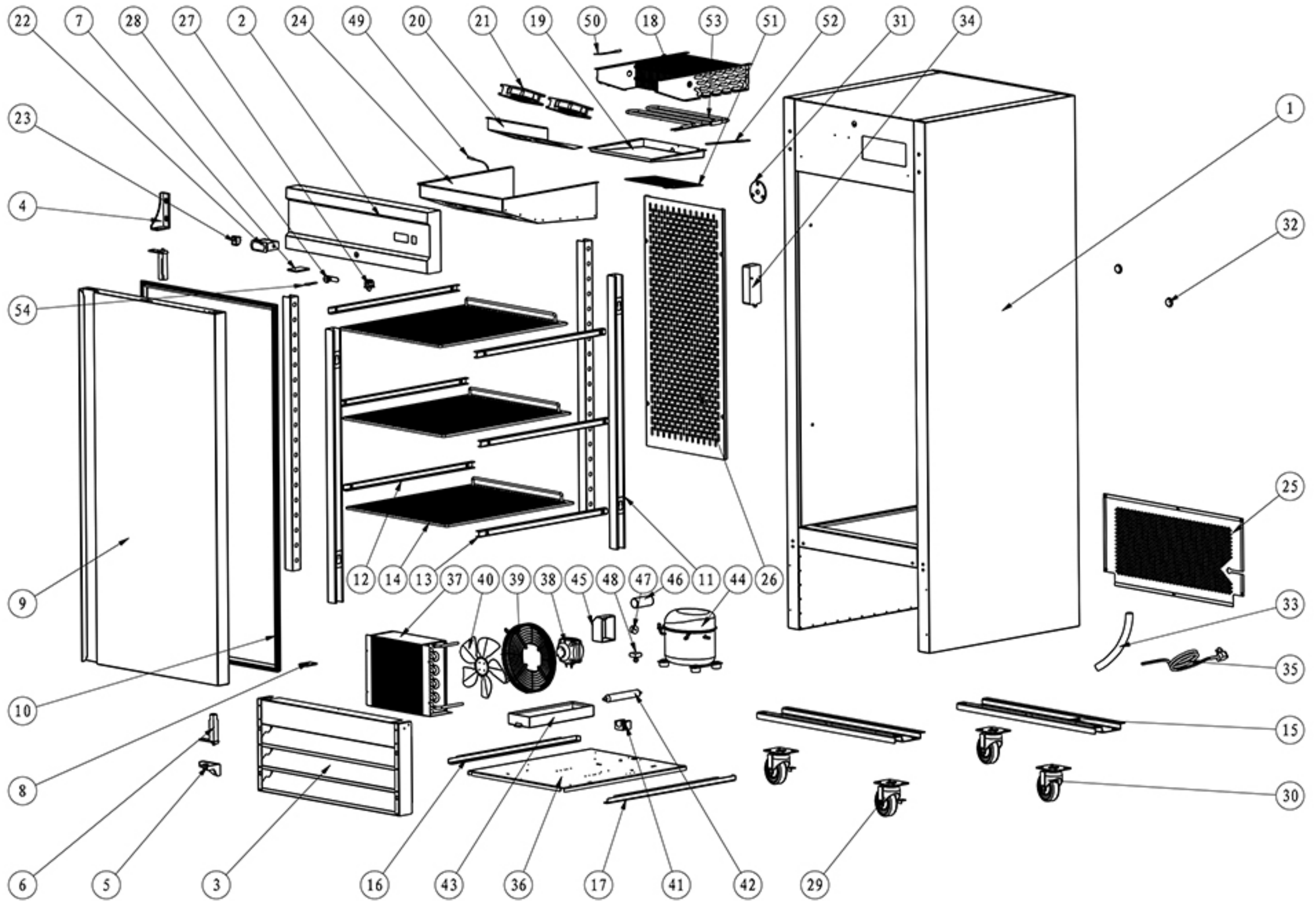


Side View



NEMA 5-15P

STF-23



NO.	Part Name	Factory Part NO.	QTY
1	CABINET		1
2	CONTROL PANEL		1
3	FRONT GRILL		1
4	UPPER RIGHT HINGE	12517020005	1
5	BOTTOM RIGHT HINGE	12517020007	1
6	SPRING HINGE BOARD	12517010001	2
7	TOP COVER FOR REVERSIBLE DOOR	16351220001	1
8	BOTTOM COVER FOR REVERSIBLE DOOR	16351220001	1
9	DOOR		1
10	GASKET	16401681328	1
11	BRACKETS		4
12	LEFT SHELF TRACK		3
13	RIGHT SHELF TRACK		3
14	SHELF	12502013304	3
15	LEG SUPPORTER		2
16	LEFT TRACK FOR ASSEMBLING PANEL		1
17	RIGHT TRACK FOR ASSEMBLING PANEL		1
18	EVAPORATOR	17404100311	1
19	INNER DRAIN PAN		1
20	FAN MOTOR INSTALLATION PANEL		1
21	EVAPORATOR FAN MOTOR	1003001114715	2
22	THERMOSTAT	17505120003	1
23	POWER SWITCH	17749211297	1
24	EVAPORATOR COVER		1
25	BACK GRILL		1
26	COMPONENTS FOR BACK SHELF		1
27	DOOR SWITCH	17749020004	1
28	LOCK	12546100952	1
29	4" CASTOR WITH BRAKE	12533070420	2
30	4" CASTOR	12533040420	2
31	DRAIN PLUG		1
32	FOAMING HOLE COVER	16352020002	2
33	DRAIN HOSE	15818180020	1
34	LIGHT COMPONENTS	17740410133	1
35	POWER CORD	17664640052	1
36	COMPRESSOR UNIT INSTALLATION BOARD		1
37	CONDENSER	17304100262	1
38	CONDENSER FAN MOTOR	22752520004	1

39	CONDENSER FAN COVER	12504050230	1
40	CONDENSER FAN MOTOR BLADE	16381738112	1
41	FILTER FIXER	16369690257	1
42	FILTER	17111250198	1
43	OUTER DRAIN PAN	16369690076	1
44	COMPRESSOR	17202100040	1
45	SPLICE BOX		1
46	START CAPACITOR		1
47	OVERLOAD PROTECTOR		1
48	STARTER		1
49	TEMPERATURE SENSOR OF CABINET INSIDE	17649490016	1
50	EVAPORATOR TEMPERATURE SENSOR	17649490012	1
51	DRAIN PAN HEATER	17602120300	1
52	DRAIN HOSE HEATER	17603110010	1
53	DEFROST HEATER	17738230063	1
54	KEY		1