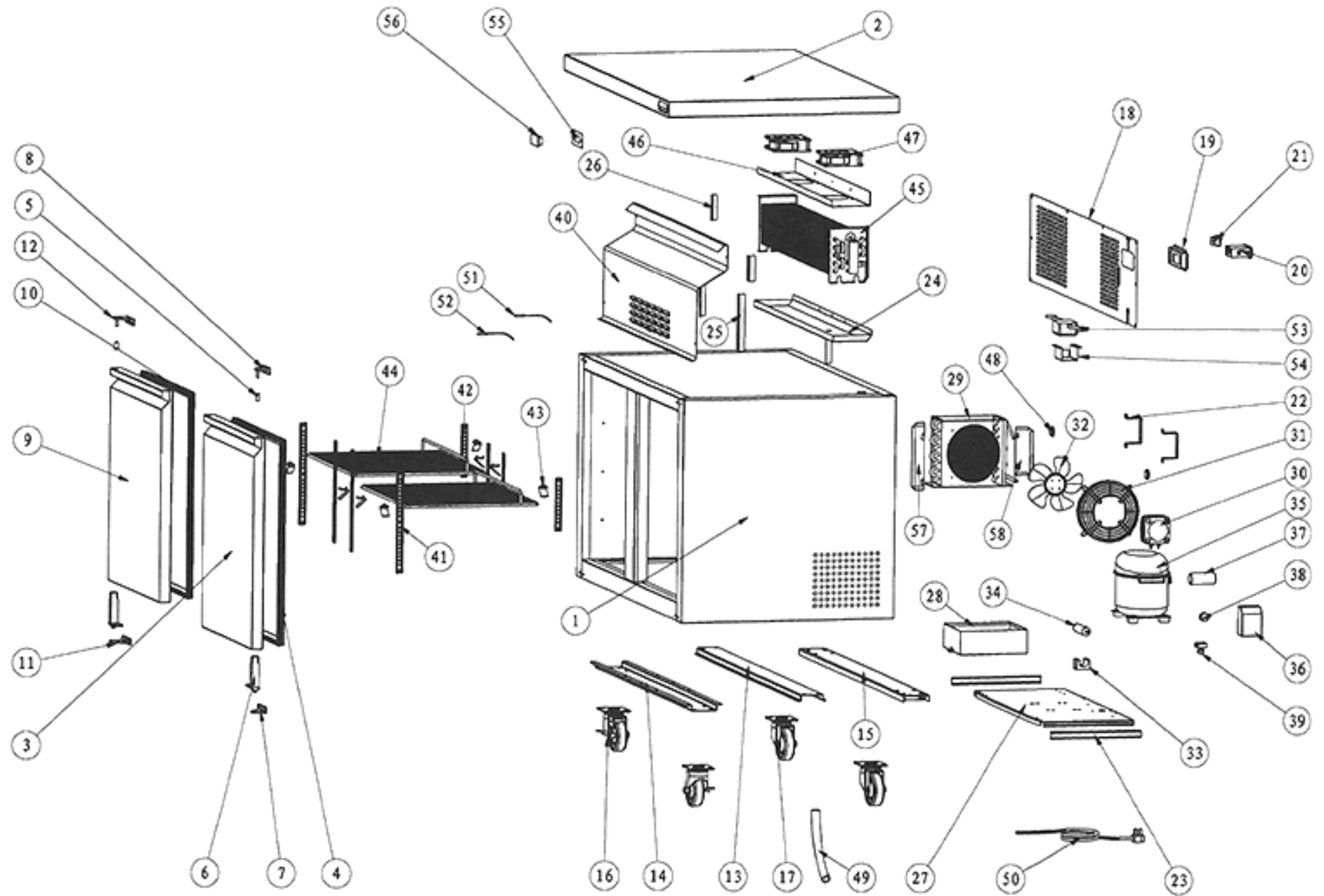


SUR-48



Part #	Part Name	Part Qty
1	Cabinet	1
2	Top Board	1
3	Right Door	1
4	Gasket	1
5	Hinge Axis	2
6	Spring Hinge	2
7	Bottom Right Hinge	1
8	Upper Right Hinge	1
9	Left Door	1
10	Gasket	1
11	Bottom Left Hinge	1
12	Upper Left Hinge	1
13	Castor Support B	1
14	Castor Support C	1
15	Castor Support A	1
16	4" Castor With Brake	2
17	4" Castor	2
18	Back Grill	1
19	Thermostat Installation Box	1
20	Thermostat	1
21	Power Switch	1
22	Stand Off Bracket	2
23	Track for Compressor Installation Board	2
24	Inner Drain Pan	1
25	Evaporator Cover Sticker 1	2
26	Evaporator Cover Sticker 2	2
27	Compressor Unite Installation Board	1
28	Outer Drain Pan	1
29	Condenser	1
30	Condenser Fan Motor	1
31	Condenser Fan Motor Cover	1
32	Condenser Fan Motor Blade	1
33	Filter Fixer	1
34	Filter	1
35	Compressor	1
36	Splice Box	1
37	Start Capacitor	1

38	Overload Protector	1
39	Starter	1
40	Evaporator Fan Cover	1
41	K Strip 3 Holes	4
42	K Strip 2 Holes	4
43	K Clip	8
44	Shelf	2
45	Evaporator	1
46	Evaporator Fan Motor Installation Board	1
47	Evaporator Fan Motor	2
48	Foaming Hole Cover	2
49	Drain Tube (φ16mm)	1
50	Power Cord	1
51	Temperature Sensor 1 (Thermostat)	1
52	Temperature Sensor 2 (Fahrenheit Temp Disp)	1
53	Transformer for Fahrenheit Temp Display	1
54	Transformer Holder	1
55	Fahrenheit Temp Display Installation Board	1
56	Fahrenheit Temp Display	1
57	Air Shield Board One	1
58	Air Shield Board Two	1
59	Baffle	1
60	Defrost Heater	1
61	Drain Hose Heater	1
62	Evaporator Temp Sensor	1

TECHNICAL DATA

Dimensions

Exterior Dimensions (WxDxH)	47.25" x 29.5" x 35.5"
Interior Dimensions (WxDxH)	42.5" x 19.5" x 24"
Net Volume (cu. ft.)	12 cu. ft.
Gross Weight	291 lbs
Packaging Dimensions (WxDxH)	50" x 32.5" x 38"

Cooling

Temperature Range	33° - 40° F
Refrigerant	R290
Maximum Ambient Temperature Rating	90° F
Defrosting	Automatic
Temperature Display	Yes
Temperature Controller	Digital
H/P	1/4

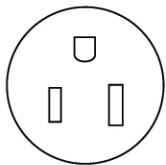
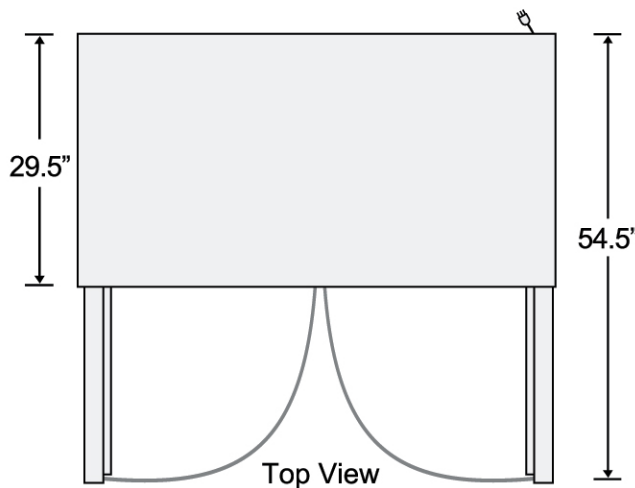
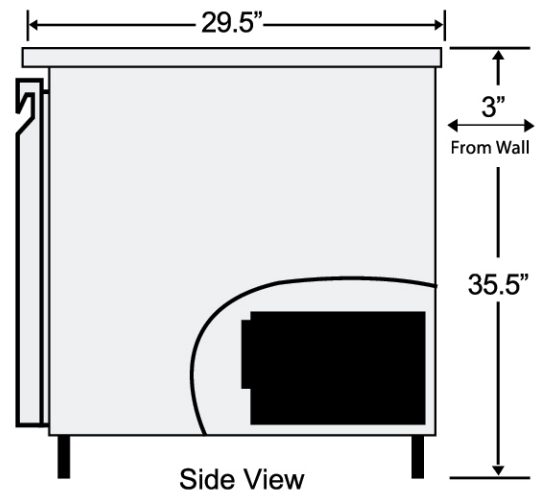
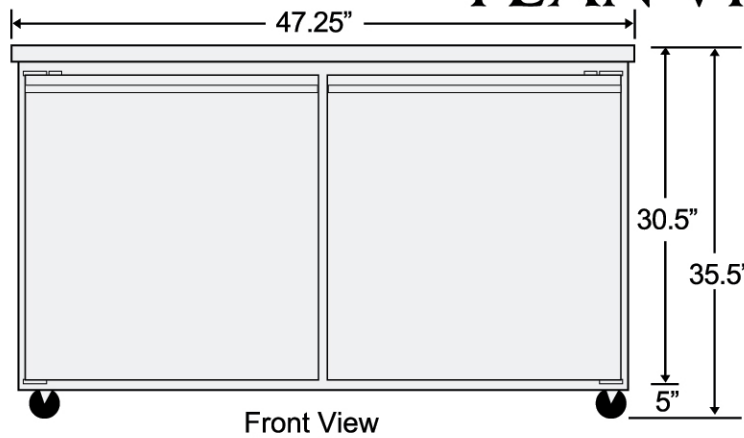
Construction

Exterior Material	430 series stainless steel
Interior Material	304 series stainless steel
Insulation Material	Foamed in place polyurethane
Shelf Material	Plastic coated steel
Shelf Load Capacity	90 lbs

Electrical

Voltage	120
Amps	4.8
Hz	60
Phase	1

PLAN VIEW



NEMA 5-15