

### Heated Self-Service Case - 32"D



MODEL SHOWN: B3632H

NOTE: SHOWN WITH OPTIONAL STAINLESS STEEL EXTERIOR

- B2432H
- B2432H-4
- B3632H
- B3632H-4

- Lengths include end panels**
- 24-3/4"L x 32-1/4"D x 82-1/2"H
  - 24-3/4"L x 32-1/4"D x 82-1/2"H
  - 36-3/4"L x 32-1/4"D x 82-1/2"H
  - 36-3/4"L x 32-1/4"D x 82-1/2"H

#### STANDARD FEATURES

- NOTE: The additional shelf option significantly increases electrical load for model. Refer to the -4 suffix model for these specifications.
- Flat upper front panel & header
- Integrated average product temperature of 160°F
- One year parts & labor warranty
- Shelving removable and adjustable on 1" centers
- Stainless steel interior
- Top light (matches shelf lights)

Features	Standard	Options
<b>EXTERIOR COLOR</b>	<input type="checkbox"/> Laminated (non-premium) Confirm pattern/grain direction	<input type="checkbox"/> Laminated (premium) Confirm pattern/grain direction <input type="checkbox"/> Stainless steel (includes lower front panel)
<b>LOWER FRONT PANEL COLOR</b>	<input type="checkbox"/> Painted - Black	<input type="checkbox"/> Stainless steel (w/stainless ext. only)
<b>BASE</b>	<input type="checkbox"/> Casters w/ levelers	
<b>END PANEL LEFT</b>	<input type="checkbox"/> Full end panel w/mirror interior (metal edge matches interior color)	<input type="checkbox"/> Cutaway end panel (metal edge matches interior color)
<b>END PANEL RIGHT</b>	<input type="checkbox"/> Full end panel w/mirror interior (metal edge matches interior color)	<input type="checkbox"/> Cutaway end panel (metal edge matches interior color)
<b>EXTERIOR BACK PANEL</b>	<input type="checkbox"/> Solid back panel, black	<input type="checkbox"/> Rear loading swing out doors (black) <input type="checkbox"/> Rear loading swing out doors (stainless)
<b>SHELVING</b>	<input type="checkbox"/> Individually controlled solid heated shelves, lighted (incandescent) - 3 levels	<input type="checkbox"/> Individually controlled solid heated shelves, lighted (ceramic metal halide) - 3 levels <input type="checkbox"/> <sup>1</sup> Individually controlled solid heated shelves, lighted (ceramic metal halide) - 4 levels <input type="checkbox"/> <sup>2</sup> Individually controlled solid heated shelves, lighted (incandescent) - 4 levels
<b>LIGHTS</b>	<input type="checkbox"/> Incandescent lights	<input type="checkbox"/> Ceramic Metal Halide high efficiency lighting
<b>ELECTRICAL CONNECT</b>	<input type="checkbox"/> 6' Straight blade power cord (base exit)	<input type="checkbox"/> 6' Locking blade power cord (base exit) <input type="checkbox"/> 6' Locking blade power cord (top exit) <input type="checkbox"/> 6' Straight blade power cord (top exit) <input type="checkbox"/> Electrical leads (remote)
<b>MISCELLANEOUS</b>		<input type="checkbox"/> Second year parts & labor warranty (excludes compressor)
<b>ACCESSORIES</b>		<input type="checkbox"/> Price tag molding (matches interior color)

**Option Notes:** 1 - See -4 tech spec for load reqmts  
 2 - See -4 tech spec for load reqmts

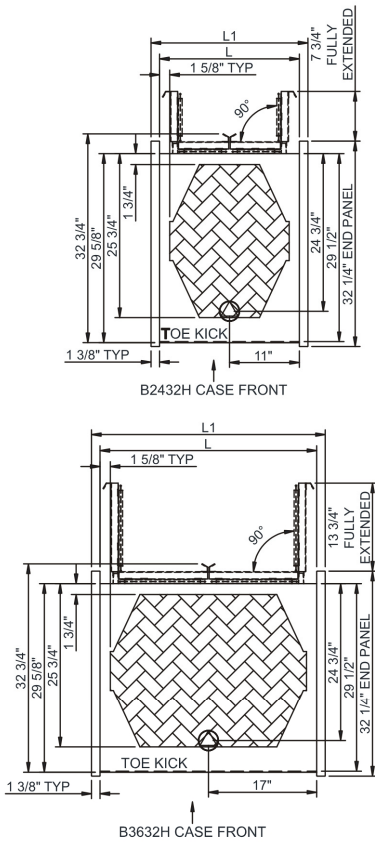
# Oasis®

## Product Specifications

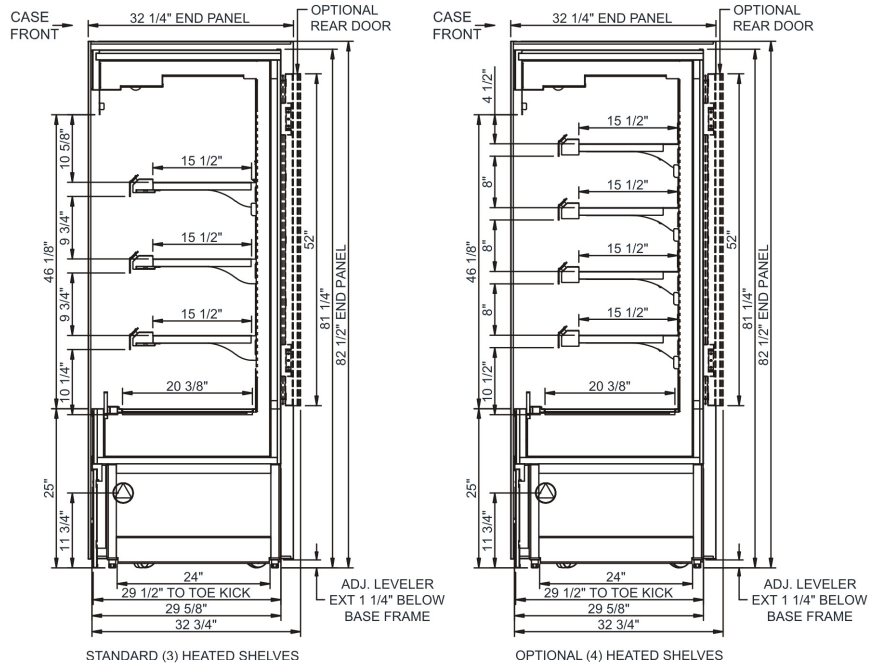
**Intended Environment:** Type I - Designed to operate in ambient conditions of 75°F with 55% relative humidity unless noted otherwise in system information below.

Zone	Intended Product To Be Displayed	Warmest Avg Prod Temp ° F
1	Packaged heated product	160

### PLAN VIEW



### SIDE VIEW



**NOTE: ALL DIMENSIONS APPROXIMATE**

- ELECTRICAL JUNCTION BOX (SUPPLIED WITH 6' LEADS OR POWER CORD).
- REMOTE FLOOR SINK & UTILITIES ACCESS AREA.
- LOCATION OF DRAIN TUBE FOR REMOTE REF. ONLY (SUPPLIED WITH 3/4" OR 1 1/2" PVC TUBE).
- REFRIGERATION LINE CONNECTION.
- SELF-CONTAINED CASE SERVICE ACCESS AREA.
- DRY CASE SERVICE ACCESS AREA.

### Model Technical Specifications

Model	L"	L1"	L2"	System	Circuit Volts	Phs	Freq	Amps ***	Watts	Wires	NEMA Plug	SST	Conv. Rack BTUH	Para. Rack BTUH	Est Wt
B2432H	N/A	24.75	.00	Heat	Circuit #1	208-240	1	60	13.91	2,942	2+G	N/A	N/A	N/A	800
B2432H-4	N/A	24.75	.00	Heat	Circuit #1	208-240	1	60	15.30	3,252	2+G	N/A	N/A	N/A	800
B3632H	N/A	36.75	.00	Heat	Circuit #1	208-240	1	60	20.34	4,296	2+G	N/A	N/A	N/A	1,000
B3632H-4	N/A	36.75	.00	Heat	Circuit #1	208-240	1	60	23.54	5,031	2+G	N/A	N/A	N/A	1,000

\*\*\* Does not include electric defrost on freezer models.

#### Important Notes:

- 1) ELECTRICAL NOTE: If GFCI is required, a GFCI breaker MUST be used in lieu of a GFCI receptacle
- 2) Performance issues (product temperatures, water on floor, etc.) caused by adverse conditions are not covered by warranty.
- 3) Keep unit at least 15' from exterior doors, overhead HVAC vents, or any air curtain disruption.
- 4) Do not expose unit to direct sunlight or any heat source (ovens, fryers, etc.).

**⚠ WARNING:** This product can expose you to chemicals, including Urethane (Ethyl Carbamate), which are known to the State of California to cause cancer and birth defects or other reproductive harm. For more information go to [www.P65Warnings.ca.gov](http://www.P65Warnings.ca.gov).

#### Regulatory Approvals:

All Models ETL Listed to UL 197  
ETL Listed to CAN/CSA 22.2 No. 109  
ETL Sanitation to NSF 4

