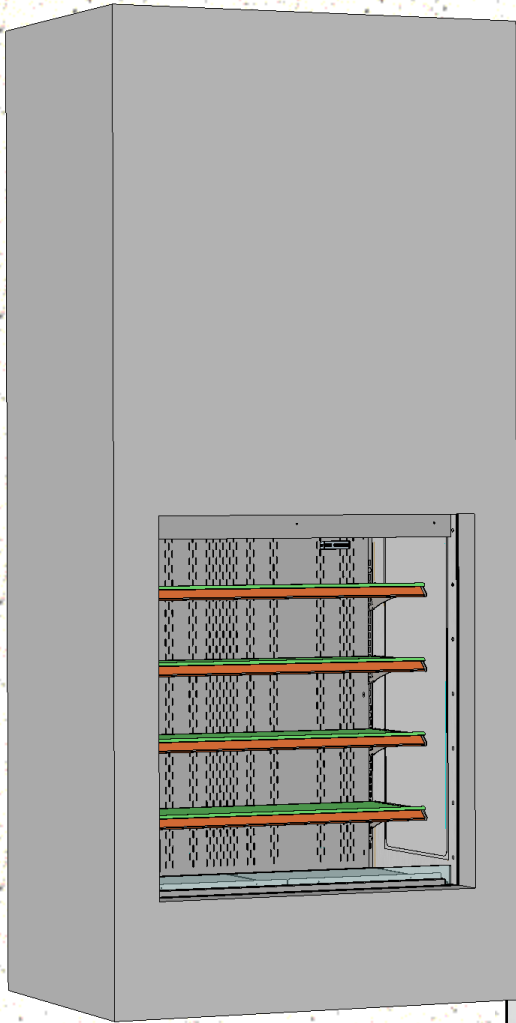


# Box Case Design Guide For Alcoves and Window Openings

P/N 20-76683

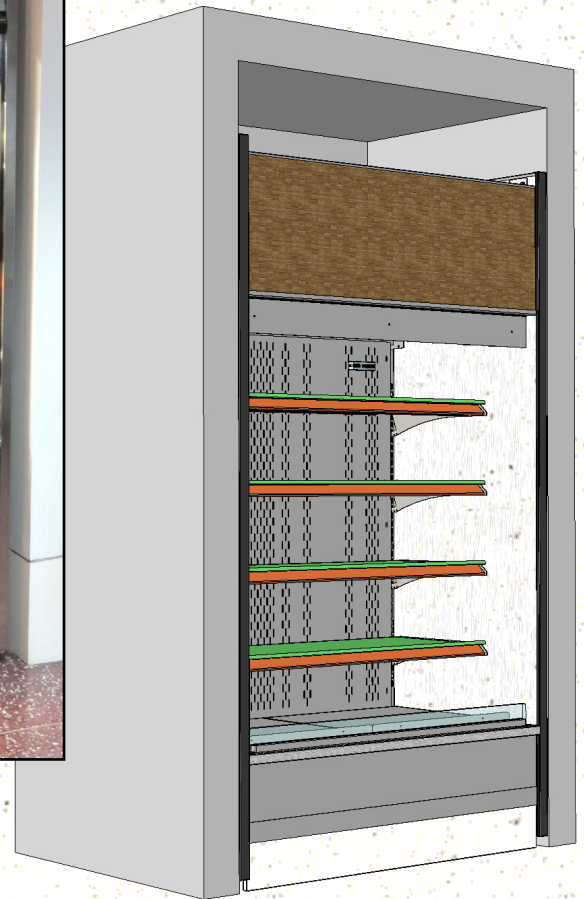
**MODEL APPLICABILITY: BXX24 (24" DEEP) and BXX32 (32" DEEP 'BOX PLUS' SERIES) UNITS\***



Model B4732TM With Top-Mounted Condenser Package Behind Window



Model B4524 With Underside-Mounted Condenser Package In Alcove



Model B4732TM With Top Mounted Condenser Package In Alcove

**\*See next page for specific model applicability.**

Note 1: This manual does NOT cover every possible installation scenario.  
Note 2: Structural Concepts is not responsible for incorrect designs or installations.  
Note 3: Contact Technical Support with design or installation questions.



Structural Concepts Corporation · 888 E. Porter Road · Muskegon, MI 49441 Phone: 231.798.8888 Fax: 231.798.4960 · www.structuralconcepts.com

**TABLE OF CONTENTS / MODEL APPLICABILITY**

<b>TABLE OF CONTENTS .....</b>	<b>2</b>
<b>SECTION A: ALCOVE UNITS WITH UNDERSIDE MOUNTED CONDENSER PACKAGES .....</b>	<b>3</b>
<b>ALCOVE UNITS WITH UNDERSIDE MOUNTED CONDENSER PACKAGES / DIMENSIONS</b>	
<b>CHART WITH 83" ALCOVE FRONT OPENING HEIGHT .....</b>	<b>4</b>
<b>SECTION B: ALCOVE UNITS WITH TOP MOUNTED CONDENSER PACKAGES .....</b>	<b>5</b>
<b>ALCOVE UNITS WITH TOP MOUNTED CONDENSER PACKAGES / 90 1/2" ALCOVE FRONT</b>	
<b>OPENING HEIGHT .....</b>	<b>6</b>
<b>ALCOVE UNITS WITH TOP MOUNTED CONDENSER PACKAGES / 83" ALCOVE FRONT</b>	
<b>OPENING HEIGHT .....</b>	<b>7</b>
<b>SECTION C: WINDOW UNITS WITH TOP MOUNTED CONDENSER PACKAGES .....</b>	<b>8</b>
<b>WINDOW UNITS WITH TOP MOUNTED CONDENSER PACKAGES AND 124 1/2" ALCOVE</b>	
<b>FRONT OPENING HEIGHT .....</b>	<b>9</b>
<b>SECTION D: ALCOVE AND WINDOW UNITS - ADJOINMENT GUIDELINES .....</b>	<b>10</b>
<b>ALCOVE AND WINDOW UNITS - ADJOINMENT DIMENSIONAL GUIDELINES .....</b>	<b>11</b>
<b>ALCOVE AND WINDOW UNITS - ADJOINMENT GUIDELINES / SEALANTS / BOLTING</b>	
<b>ADJOINED UNITS .....</b>	<b>12</b>

**\*BOX CASE CONSTRUCTION GUIDE FOR  
ALCOVE & WINDOW OPENING MODEL APPLICABILITY**

*B3424, B4524, B6624, B8824, B3632, B3632TM<sup>∞</sup>, B4732, B4732TM<sup>∞</sup>, B5932,  
B5932TM<sup>∞</sup>, B7132, B7132TM<sup>∞</sup>, B8832, B8832TM<sup>∞</sup>, B2432H~, B3632H~*

*∞ TM represents units with top mounted condenser packages.  
~ Heated cases*

# SECTION A: ALCOVE UNITS WITH UNDERSIDE MOUNTED CONDENSER PACKAGES

**ALCOVE UNITS W/UNDERSIDE MNTD CONDENSER PACKAGES / 83" ALCOVE FRONT OPENING HEIGHT**

**CASE & ALCOVE DIMENSIONS CHART**

MODEL	CASE LENGTH *	CASE DEPTH *	CASE HEIGHT *	REQUIRED ALCOVE FRONT OPENING HEIGHT **	REQUIRED ALCOVE WIDTH **	REQUIRED ALCOVE DEPTH ∞
B3424	34 1/2"	24 1/2"	82 1/2"	83"	34 3/4"	25"
B4524	45 1/2"				45 3/4"	
B6624	66 3/8"				66 5/8"	
B8824	88 3/8"				88 5/8"	
B3632	36 5/8"	32 3/4"			36 7/8"	33 1/4"
B4732	47 5/8"				47 7/8"	
B5932	59 5/8"				59 7/8"	
B7132	71 5/8"				71 7/8"	
B8832	88 3/8"	32 1/4"			88 5/8"	
B2432H (HEATED)	24 1/2"				24 7/8"	
B3632H (HEATED)	36 1/2"		36 7/8"			

\* Approximated dimensions only.

\*\* Minimum required dimensions.

∞ **Important:** Dimensions assume that **NO ELECTRICAL RECEPTACLE or CORD BODY** is behind unit. If either are present, required alcove depth will vary accordingly. Units are shipped with 6' power cords.

**Rear Alcove Construction/Design Note:**

- Case illustration (shown at right) prevents view of rear alcove construction.
- Access to condenser package is from **FRONT OF CASE** only.
- Thus, rear alcove may be **ENTIRELY ENCLOSED** (inaccessible) OR **OPEN** (accessible).
- Dimensions listed are **TRUE** regardless of rear alcove construction.



MODEL B4524 WITH UNDERSIDE MOUNTED CONDENSER PACKAGE

**Important: Layout Scenarios Shown On This Page Cannot Be Integrated With Others In This Document!**

**SECTION B:  
ALCOVE  
UNITS WITH  
TOP  
MOUNTED  
CONDENSER  
PACKAGES**

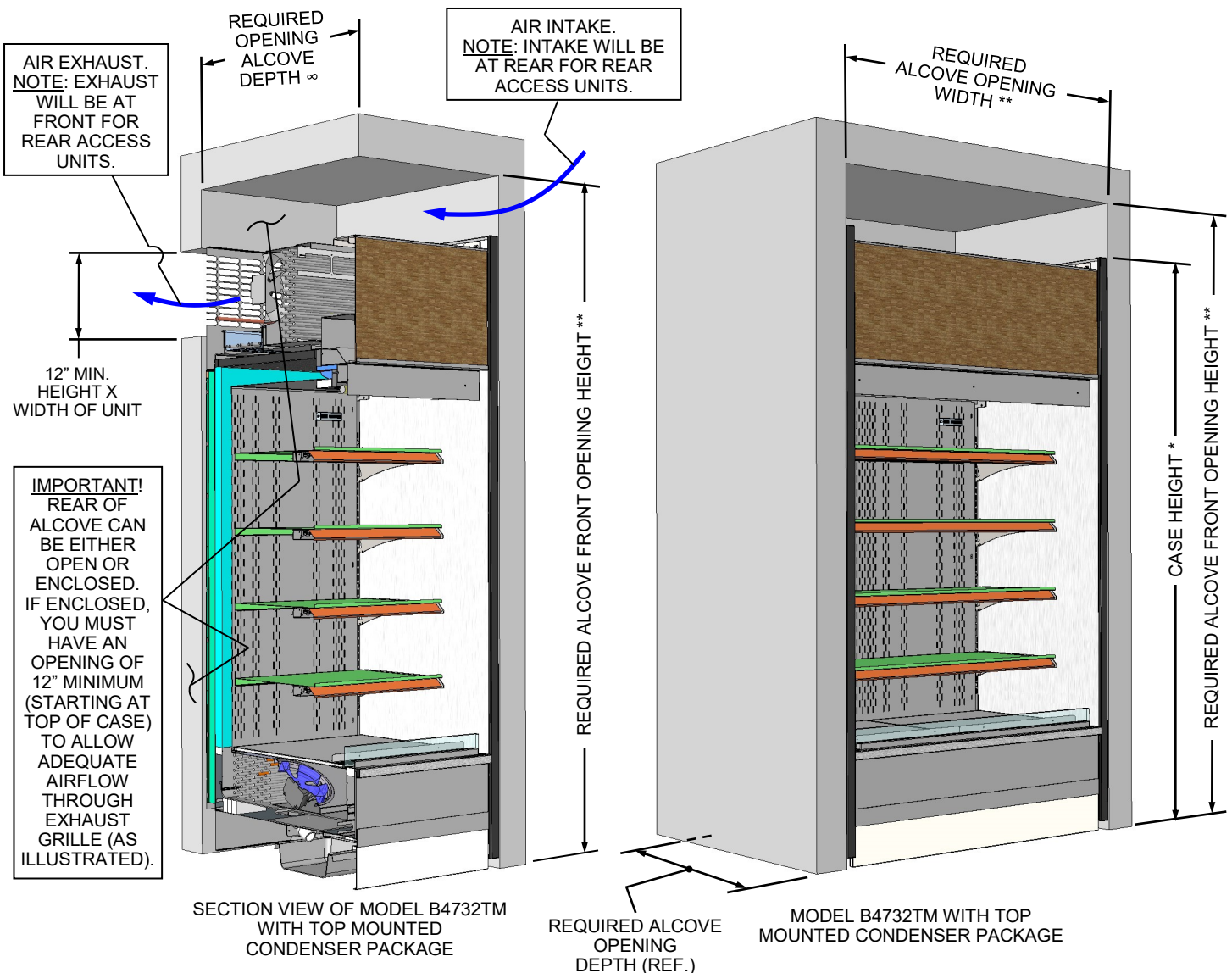
**ALCOVE UNITS W/TOP MNTD CONDENSER PACKAGES / 90 1/2" ALCOVE FRONT OPENING HEIGHT**

**CASE & ALCOVE DIMENSIONS CHART**

MODEL	CASE LENGTH *	CASE DEPTH *	CASE HEIGHT *	REQUIRED ALCOVE FRONT OPENING HEIGHT **	REQUIRED ALCOVE OPENING WIDTH **	REQUIRED ALCOVE OPENING DEPTH <sup>∞</sup>
B3632TM	36 5/8"	32 3/4"	82 1/2"	90 1/2"	36 7/8"	33 1/4"
B4732TM	47 5/8"				47 7/8"	
B5932TM	59 5/8"				59 7/8"	
B7132TM	71 5/8"				71 7/8"	
B8832TM	88 3/8"				88 5/8"	

\* **Approximated dimensions only.**  
 \*\* **Minimum required dimensions.**

<sup>∞</sup> **Important: Dimensions assume that NO ELECTRICAL RECEPTACLE or CORD BODY is behind unit. If either are present, required alcove depth will vary accordingly. Units are shipped with 6' power cords.**



**Important: Layout Scenarios Shown On This Page Cannot Be Integrated With Others In This Document!**

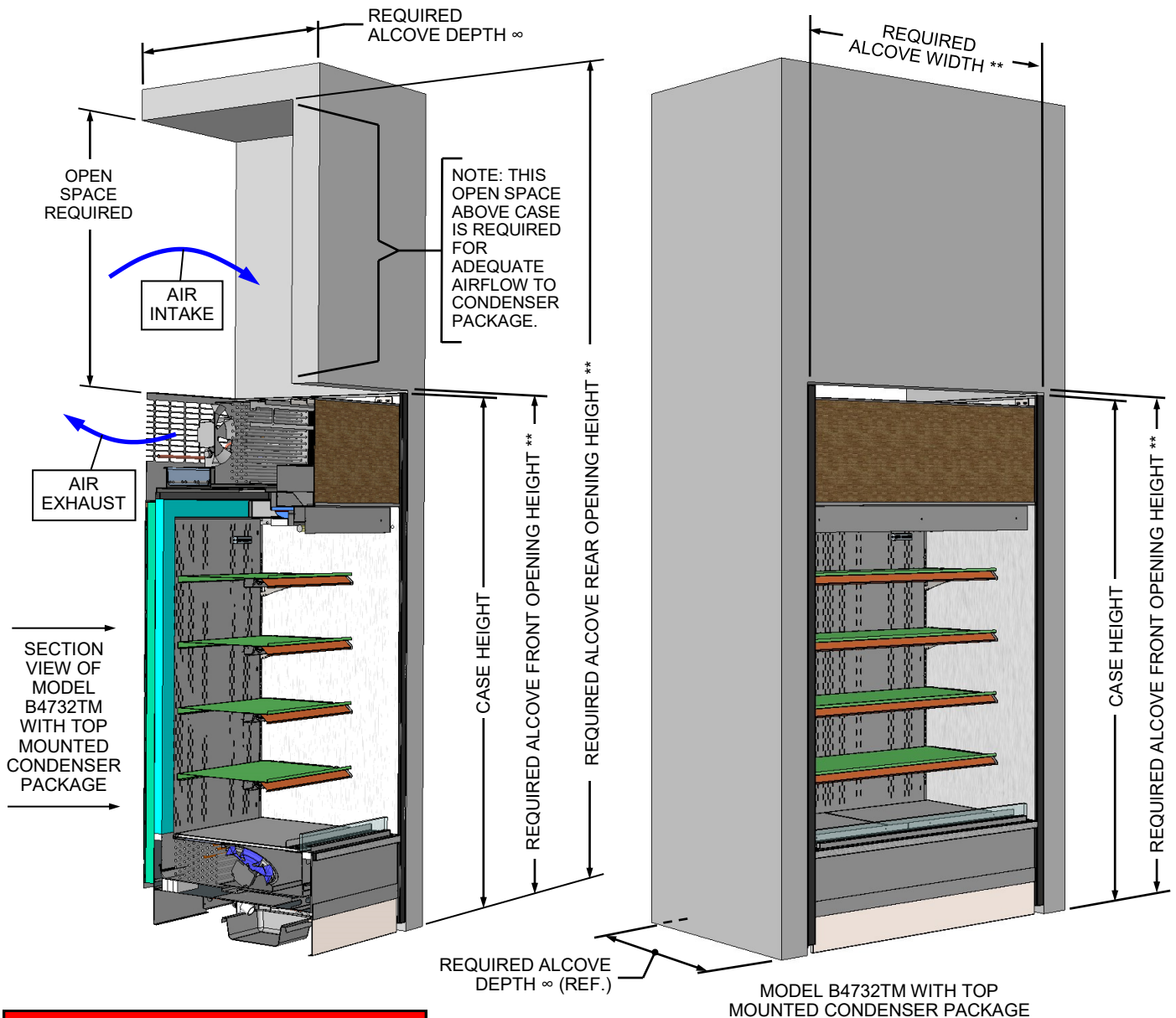
**ALCOVE UNITS WITH TOP MOUNTED CONDENSER PACKAGES / 83" ALCOVE FRONT OPENING HEIGHT**

**CASE & ALCOVE DIMENSIONS CHART**

MODEL	CASE LENGTH *	CASE DEPTH *	CASE HEIGHT *	REQUIRED ALCOVE FRONT OPENING HEIGHT **	REQUIRED ALCOVE REAR OPENING HEIGHT **	REQUIRED ALCOVE WIDTH **	REQUIRED ALCOVE DEPTH ∞
B3632TM	36 5/8"	32 3/4"	82 1/2"	83"	124 1/2"	36 7/8"	33 1/4"
B4732TM	47 5/8"					47 7/8"	
B5932TM	59 5/8"					59 7/8"	
B7132TM	71 5/8"					71 7/8"	
B8832TM	88 3/8"					88 5/8"	

\* **Approximated dimensions only.**  
 \*\* **Minimum required dimensions.**

∞ **Important:** Dimensions assume that **NO ELECTRICAL RECEPTACLE or CORD BODY** is behind unit. If either are present, required alcove depth will vary accordingly. Units are shipped with 6' power cords.



**Important: Layout Scenarios Shown On This Page Cannot Be Integrated With Others In This Document!**

**SECTION C:  
WINDOW  
UNITS WITH  
TOP  
MOUNTED  
CONDENSER  
PACKAGES**



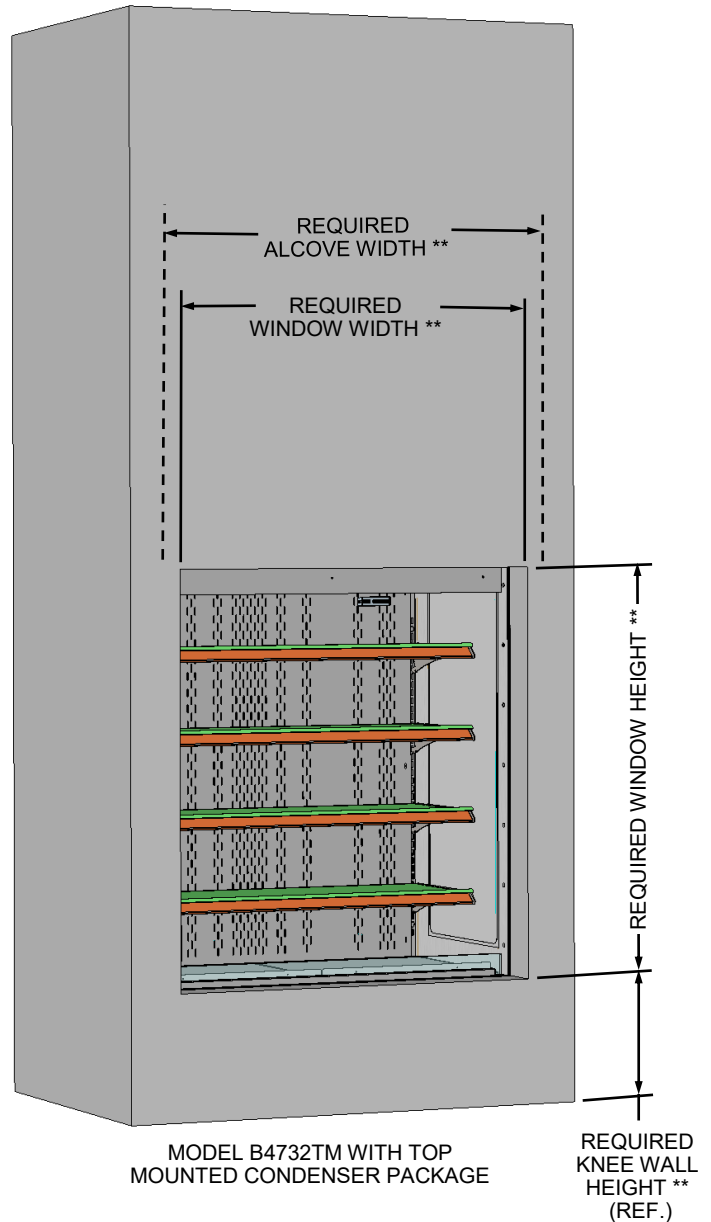
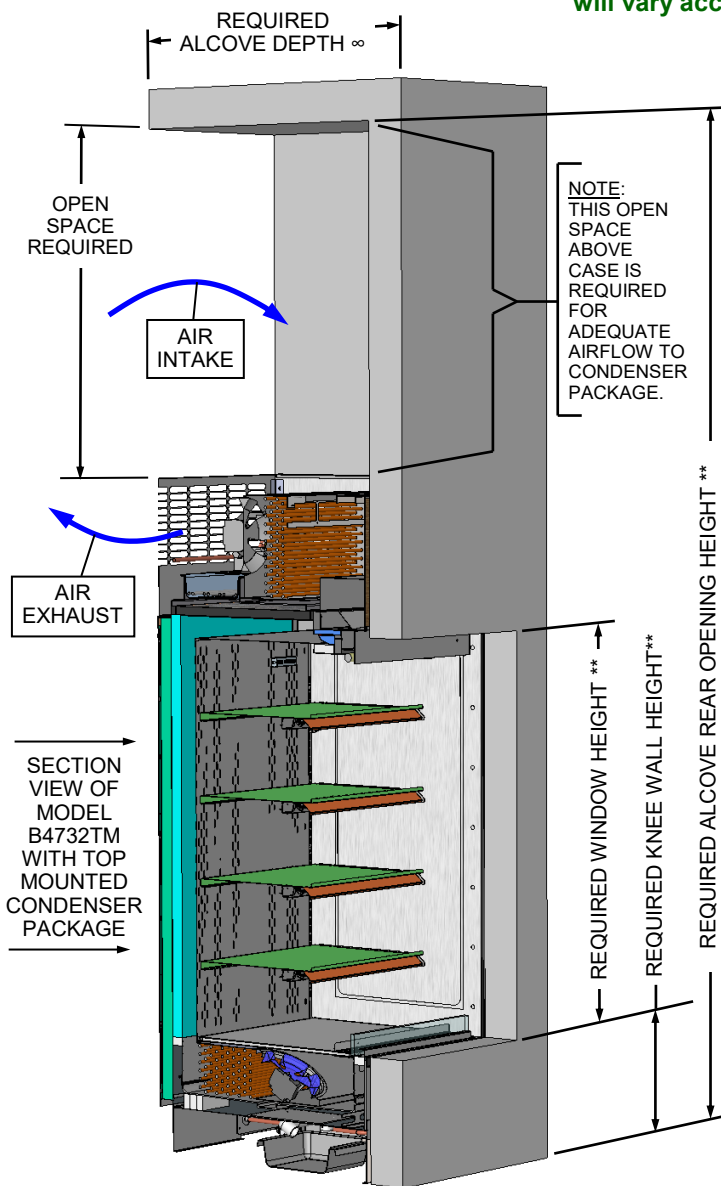
**WINDOW UNITS W/TOP MOUNTED CONDENSER PACKAGES / 124 1/2" ALCOVE REAR OPENING HEIGHT**

**CASE & WINDOW DIMENSIONS CHART**

MODEL	CASE LENGTH *	CASE DEPTH *	CASE HEIGHT*	REQUIRED ALCOVE REAR OPENING	REQUIRED WINDOW HEIGHT **	REQUIRED WINDOW WIDTH **	REQUIRED ALCOVE WIDTH **	REQUIRED KNEE WALL HEIGHT **	REQUIRED ALCOVE DEPTH ∞
B3632TM	36 5/8"	32 3/4"	82 1/2"	124 1/2"	49 1/4"	34"	36 7/8"	15"	33 1/4"
B4732TM	47 5/8"					45"	47 7/8"		
B5932TM	59 5/8"					57"	59 7/8"		
B7132TM	71 5/8"					69"	71 7/8"		
B8832TM	88 3/8"					88 3/4"	88 5/8"		

\* Approximated dimensions only. \*\* Minimum required dimensions.

∞ Important: Dimensions assume that NO ELECTRICAL RECEPTACLE or CORD BODY is behind unit. If either are present, required alcove depth will vary accordingly. Units are shipped with 6' power cords.

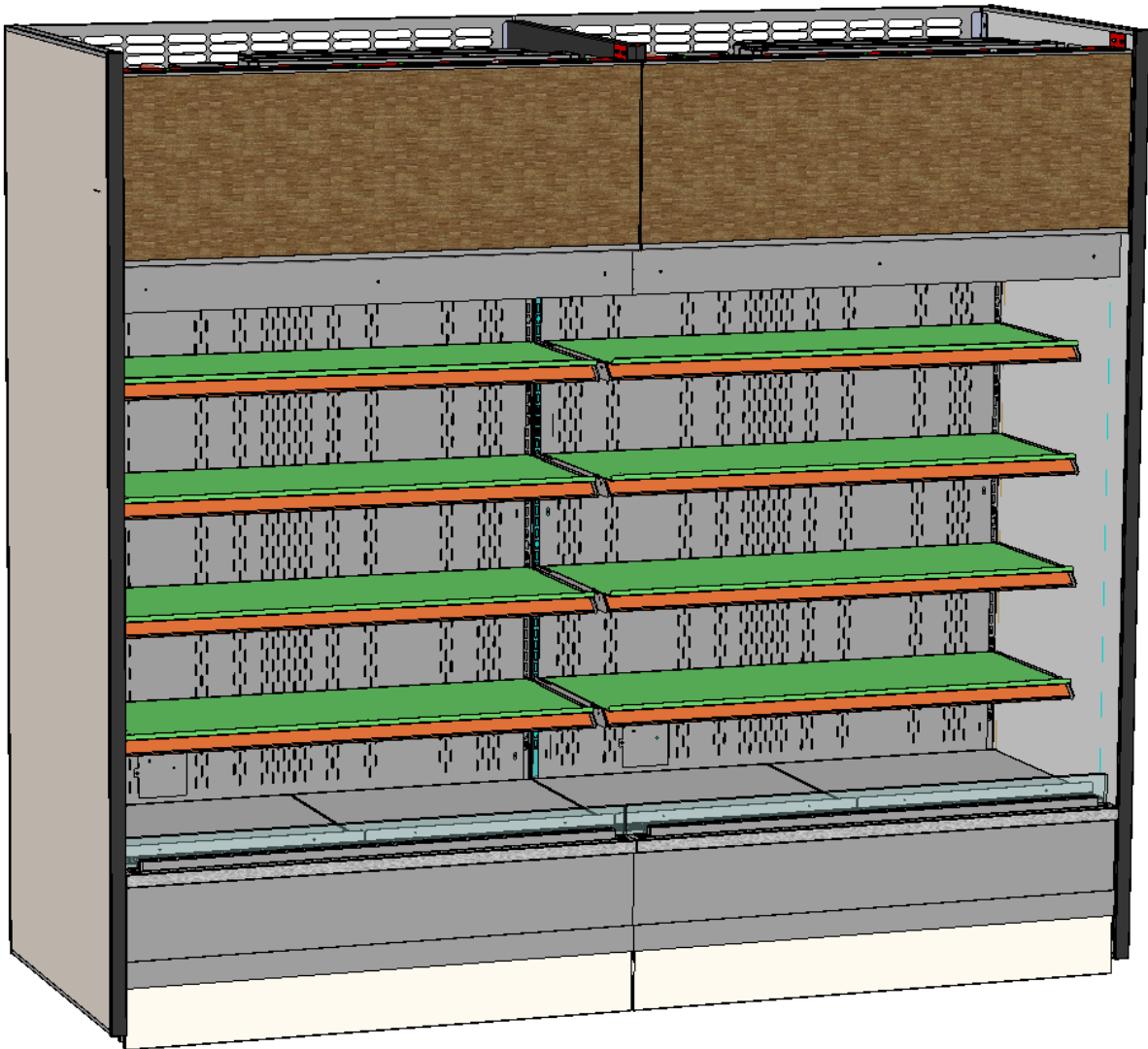


**Important: Layout Scenarios Shown On This Page Cannot Be Integrated With Others In This Document!**

**SECTION D:  
ALCOVE  
AND  
WINDOW  
UNITS -  
ADJOINMENT  
GUIDELINES**

# IMPORTANT!

1. ADJOINED CASES WILL HAVE END PANELS REMOVED AT EACH POINT OF ADJOINMENT.
2. EACH END PANEL IS 1 5/16" WIDE.
3. **CAUTION! CHECK THAT FLOOR PLANS TAKE INTO ACCOUNT END PANEL REMOVAL (AS PART OF ADJOINMENT PROCESS) FOR DIMENSIONAL ACCURACY. OTHERWISE, ADJOINED UNITS WILL NOT BE PROPERLY DISPLAYED IN ALCOVES AND WINDOWS.**
4. YOU MUST FOLLOW VERY SPECIFIC GUIDELINES WHEN ADJOINING CASES. SEE NEXT PAGE FOR DETAILED INSTRUCTIONS.



MODELS B4732TM SHOWN ABOVE FOR TWO (2) ADJOINED UNITS.  
**NOTE:** THERE ARE ONLY TWO (2) END PANELS USED IN ANY LINEUP  
(REGARDLESS OF HOW MANY CASES ARE INCLUDED IN LINEUP).

**1. Overview / Silicone and Butyl Application**

Sealant Overview:

- Warranty is void if improper sealant is used.
- Sealing tub prevents air from escaping through seams between cases (causing condensation problems and reducing refrigeration efficiency).
- Sealing also prevents water from seeping between cases to the floor.

Silicone and Butyl Application:

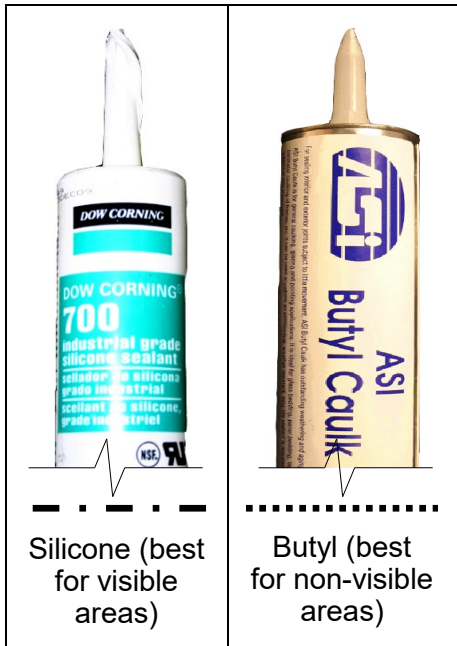
- Form (1) INNER sanitation bead AND (1) refrigeration bead BEFORE case is adjoined (as shown).
- Then, AFTER case is adjoined (and bolted), form (1) OUTER sanitation bead (as shown) into any cavities or gaps that may remain along outer adjointment areas where butyl has ALREADY been applied.
- Also place a thick bead of caulk around drain.

**2. Bolting Adjoined Units**

- Bolt holes are at various locations (depending upon model). Model illustrated MAY NOT exactly reflect your particular unit but will likely be similar in layout.
- Use appropriately sized nuts and bolts for each hole.
- #1 hole is accessible at honeycomb (slight adjustment or removal of honeycomb air diffuser may be necessary for attachment of bolt).
- #2 hole is accessible near rear plenum.

- #3 holes are accessible after removing decking.
  - #4-6 holes are accessible after removing front panel.
  - #7-9 holes are accessible after removing rear panel.
- >> Be sure to reattach components to case after the adjointment process is complete.

**Note: Any changes to this document must also be made do P/N 54110**



**Note: Model B4732 (Unit Shown) May Not Exactly Reflect Every Feature or Option of Your Particular Case.**

