

Bag Dispensers

- Dispenser mounts flush into counter
- Durable ABS construction



ITEM #	DESCRIPTION	DIAMETER: IN (CM)	CUTOUT DIMENSIONS W X H: IN (CM)	CASE LOT
MB-1	Bag dispenser, 2 compartments, flush mount	10 ³ / ₈ x 7 ¹ / ₂ (27 x 19)	9 ³ / ₈ x 6 ³ / ₈ (24.7 x 16.7)	1

NAPKIN DISPENSERS

Napkin Dispensers



- Napkin dispenser is built into the cabinet
- Cabinet is made of durable ABS



CTNFO-06

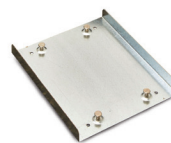
CTNO-06

ITEM #	DESCRIPTION	DIMENSIONS (W X D X H): IN (CM)	COLOR
CTNO-06	Countertop napkin dispenser (folded and interfold napkins 5 x 6 ¹ / ₂ to 4 ¹ / ₂ - 5 x 6 ¹ / ₂ - holds 100 napkins) and condiment organizer. Adjustable compartments.	9 ³ / ₈ x 19 ¹ / ₄ x 15 ³ / ₈ (24.4 x 48.9 x 38.6)	Black ABS plastic and smoked acrylic
CTNCLS-06	Countertop napkin dispenser (folded and interfold napkins 5 x 6 ¹ / ₂ to 4 ¹ / ₂ - 5 x 6 ¹ / ₂ - holds 100 napkins) cup, lid, straw organizer	9 ³ / ₈ x 19 ¹ / ₄ x 15 ³ / ₈ (24.4 x 48.9 x 38.6)	Black ABS plastic and smoked acrylic
CTNFO-06	Countertop napkin dispenser (folded and interfold napkins 5 x 6 ¹ / ₂ to 4 ¹ / ₂ - 5 x 6 ¹ / ₂ - holds 100 napkins), condiment organizer and flatware holder. Comes with 4- #52633	9 ³ / ₈ x 19 ¹ / ₄ x 15 ³ / ₈ (24.4 x 48.9 x 38.6)	Black ABS plastic and smoked acrylic

Wall-Mounted Napkin Dispensers



- Save valuable counter space
- Dispensers feature a heavy-gauge metal housing with durable plastic faceplate
- Features unique locking system for reducing pilferage
- Offers an exclusive overload protection
- Dimensions: 8"L x 11¹/₈"W x 6"H (20.3 x 19.7 x 15.2)



ITEM #	FOLDED NAPKIN SIZE: IN (CM)	OVERALL DIMENSIONS	CAPACITY	COLOR	CASE LOT
6512-88	5 ³ / ₄ x 6 ¹ / ₂ (13.3 x 16.5)	8 x 11 ¹ / ₈ x 6 (20.3 x 19.7 x 15.2)	175	Black	1

In-Counter Napkin Dispensers

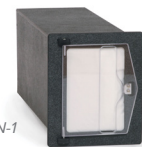
- Mounts horizontally, vertically, or diagonally



6525-13



FMHVN-1



ITEM #	DESCRIPTION	FOLDED NAPKIN SIZE: IN (CM)	INTERFOLD NAPKIN SIZE: IN (CM)	OVERALL DIMENSIONS	CAPACITY	COLOR	CASE LOT
6535-13	Stainless steel limited in-counter saves 10% usage	5 x 6 ¹ / ₂ or 5 ¹ / ₄ x 6 ¹ / ₂ (12.7 x 16.5 or 13.3 x 16.5)	4 ¹ / ₄ - 5 ¹ / ₄ x 6 ¹ / ₂ (10.7 x 13.3 x 16.5)	19 ¹ / ₂ x 9 ¹ / ₂ x 7 ³ / ₄ (49.5 x 24.1 x 19.6)	500	Chrome	1
6520-28	Stainless steel in-counter dispenser	3 ³ / ₄ x 6 ¹ / ₂ (9.5 x 16.5)		19 ¹ / ₂ x 9 ¹ / ₂ x 6 ³ / ₄ (49.5 x 24.1 x 17.1)	500	Chrome	1
6525-13	Stainless steel in-counter dispenser	5 x 6 ¹ / ₂ or 5 ¹ / ₄ x 6 ¹ / ₂ (12.7 x 16.5 or 13.3 x 16.5)		5 x 6 ¹ / ₂ or 5 ¹ / ₄ x 6 ¹ / ₂ (12.7 x 16.5 or 13.3 x 16.5)	500	Clear	1
6525-28	Stainless steel in-counter dispenser	5 x 6 ¹ / ₂ or 5 ¹ / ₄ x 6 ¹ / ₂ (12.7 x 16.5 or 13.3 x 16.5)		5 x 6 ¹ / ₂ or 5 ¹ / ₄ x 6 ¹ / ₂ (12.7 x 16.5 or 13.3 x 16.5)	500	Chrome	1
FMHVN-1*	Black ABS in-counter high-volume dispenser	5 x 6 ¹ / ₂ (12.7 x 16.5)		8 ¹ / ₂ x 7 ¹ / ₈ x 19 ¹ / ₂ (21.6 x 18.1 x 49.5)	500	Black	1

*Only mounts vertically or horizontally